



箱式风机系列

Cabinet Fans Series
C B / C B - F / C B P F

企业简介

浙江亿利达风机股份有限公司成立于1994年，是国内规模最大的空调风机、工程风机生产企业之一，公司总部位于浙江台州，总占地面积148000平方米，总资产3亿余元。旗下设有广东亿利达风机有限公司，浙江亿利达科技有限公司及天津亿利达风机有限公司，并与德国华德公司合资成立了台州华德通风机有限公司。

1998年亿利达在行业内率先通过ISO9001质量管理体系认证;2001年成为美国AMCA协会会员,按美国AMCA标准要求建立了风机综合性能试验室；2005年通过ISO14001环境体系认证；“亿利达”连续多次被评为浙江省著名商标、浙江省名牌产品。

公司开发生产的离心风机、轴流风机、箱式风机、屋顶风机、管道风机等系列产品，经权威机构检测和广大客户使用，性能达到国内领先水平，是行业的主导产品，多项产品列为国家重点新产品、国家级火炬计划项目、通过AMCA产品认证。产品广泛应用于通风系统、制冷空调等行业。

公司以“致力风机产业发展、开发节能环保产品、树立行业精品典范、打造国际知名品牌”为企业使命，拥有完善的服务体系及良好的信誉，为顾客提供最具性价比的产品和服务，努力打造具有国际竞争力的知名品牌。

亿利达以先进的管理理念以及完善的质量保证体系为基础，不断吸收和引进具有先进水平的高新技术，积极推进产品的持续改进和技术创新，确保每一个生产环节都得到严格的控制，使亿利达始终趋于行业领先地位。

Introduction Of Enterprise

Zhejiang Yilida Ventilator Co., Ltd. established in 1994 is one of the largest A/C ventilator and industry ventilator manufacturers in China. Its headquarter locates in Taizhou, Zhejiang, with a total 148,000 square meters and more than 3 hundred million RMB of total assets. It has three subsidiaries: GuangDong Yilida Ventilator Co. Ltd., TianJin Yilida Ventilator Co.Ltd. and ZheJiang Yilida technology Co.Ltd. Moreover, the company and WOLTER have set up a new joint venture company Taizhou Wolter Ventilation Co., Ltd.

Zhejiang Yilida Ventilator Co., Ltd. passed ISO9001 quality system certification in 1998, and is the first company in the industry to get such a certificate; it became a member of AMCA International in 2001, and established a ventilator laboratory for comprehensive performance according to AMCA International; and it was awarded ISO14001 environment system certificate in 2005. “YILIDA” is awarded Zhejiang Province’ s famous trademark and the products are recognized as Zhejiang Province well-known brands in consecutive years.

The line of products, including centrifugal fans, axial fans, cabinet fans, roof fans and duct fans etc. are tested by such authority inspection institutions and validated by most customers. Consequently, they are proved to be at the advanced level in China and stand on the outstanding position in this industry. Most of the products are enlisted into national key new products and Nation Torch project, and licensed to bear the AMCA seal. The products are widely used in Refrigeration Air Conditioning, ventilation system and other various industries.

Zhejiang Yilida Ventilator Co., Ltd’ s mission statement: “Dedicate to the development of ventilator industry; develop the energy-saving, environmental products; set up the model of industry; and create a world-known brand” . Yilida will provide customers the most reliable products with very competitive price and high efficient service to build well-known brand in international Competition.

On the basis of the advanced management idea and perfect quality system, Yilida constantly absorbs and adapts the new advanced technology; actively promote the products, precisely control the quality in each of working process, as a result, to keep it standing on the leading position in the industry.

CONTENTS

目录



CB/CB-F系列产品说明 01
CB Series Ventilator Position definition

CB系列风机进出口方向命名图 02
Explanation of CB/CB-F Series Ventilator Products



CB/CB-F系列性能曲线 03-17
CB/CB-F Series Ventilator Performance Chart

CB/CB-F系列风机运行极限 18
CB/CB-F Series Ventilator Operation Limits



CBPF系列性能曲线 19-24
CBPF Series Ventilator Performance Chart

CB、CB-F系列低噪声风机箱

CB系列节能低噪声风机箱系引进德国、英国先进技术，通过本公司吸收、消化、提高而研制成功的箱体式离心风机。具有效率高、噪声低、性能优良、结构新颖、安装方便等优点。CB-F系列为一机两用（通风和消防）型风机箱，耐高温并已取得国家消防认证，是高层建筑通风及消防、排烟两用的新型产品。CBPF系列为无蜗壳风机箱，结构简单、安装方便。

CB、CB-F LOW-NOISE CABINET FAN

CB series fan units are designed and developed on the basis of advanced technology from German and UK. It has the features of efficiency, low noise, excellent performance, compact structure, easy installation and so on. CB-F series are temperature resistance and has certificated for Fire Protection. CBPF series are Cabinet fan with Plug fan, are simple frame, easy installation.



型号说明

CB 500 D



Designation of Products

- 风机形式: D型前倾风机
Type D Forward Fan
- Q型后倾风机
Type Q Backward Fan
- H型机翼形风机
Type H Airfoil Fan
- 叶轮名义直径 (mm)
Nominal diameter of impeller (mm)
- CB 标准型风机箱
Standard Cabinet Fan
- CB-F 消防排烟风机箱
Exhaust Smoke Cabinet Fan
- CBPF 无蜗壳风机箱
Cabinet Fan with Plug Fan

风机性能

1. 本样本中风机性能均指在标准状态下的性能。即指风机进气状态为:

进气压力 Pa = 101.325 KPa

进气温度 t = 20 °C

进气气体密度 ρ = 1.2 Kg/m³

若顾客实际使用的气体进气状态或使用的风机转速改变时则可按下列关系式换算:

$$\frac{Q_0}{Q_0^*} = \frac{n}{n^*}$$

$$\frac{P_0}{P_0^*} = \frac{n^2}{n^{*2}} \cdot \frac{\rho}{\rho^*} \quad \frac{P_0}{P_0^*} = \frac{n^2}{n^{*2}} \cdot \frac{Pa^*}{Pa} \cdot \frac{273+t}{273+t^*}$$

$$\frac{Nin_0}{Nin_0^*} = \frac{n^3}{n^{*3}} \cdot \frac{\rho}{\rho^*} \quad \frac{Nin_0}{Nin_0^*} = \frac{n^3}{n^{*3}} \cdot \frac{Pa^*}{Pa} \cdot \frac{273+t}{273+t^*}$$

上述式中

(1) 流量 Q (M³/h)、压力 P (Pa)、转速 n (r/min)、内功率 Nin₀ (kw) 由性能曲线上查得。

(2) 右上角加符号 “*” 的则为顾客实际使用气体进气状态下所需的性能参数。

(3) 上式中略去了相对湿度的差别。

Performance of Ventilator

1. The Series ventilator performances provided in this brochure are based upon operation at standard conditions as follows:

Air Inlet Pressure Pa = 101.325 KPa

Air Inlet Temperature t = 20 °C

Air Inlet Density ρ = 1.2 Kg/m³

Performances with different inlet conditions and operating speeds can be computed by using the following equations:

$$\frac{Q_0}{Q_0^*} = \frac{n}{n^*}$$

$$\frac{P_0}{P_0^*} = \frac{n^2}{n^{*2}} \cdot \frac{\rho}{\rho^*} \quad \frac{P_0}{P_0^*} = \frac{n^2}{n^{*2}} \cdot \frac{Pa^*}{Pa} \cdot \frac{273+t}{273+t^*}$$

$$\frac{Nin_0}{Nin_0^*} = \frac{n^3}{n^{*3}} \cdot \frac{\rho}{\rho^*} \quad \frac{Nin_0}{Nin_0^*} = \frac{n^3}{n^{*3}} \cdot \frac{Pa^*}{Pa} \cdot \frac{273+t}{273+t^*}$$

where:

(1). The volume flow rate, Q (m³/h), total pressure, P (Pa), speed, n (r/min) and Nin₀ (kw) are obtained from the performance charts included in this brochure.

(2). An asterisk on the variable denotes the user's actual air inlet conditions.

(3). The effects of typical differences in relative humidity are omitted from the foregoing equations.



CB系列风机进出口方向命名图

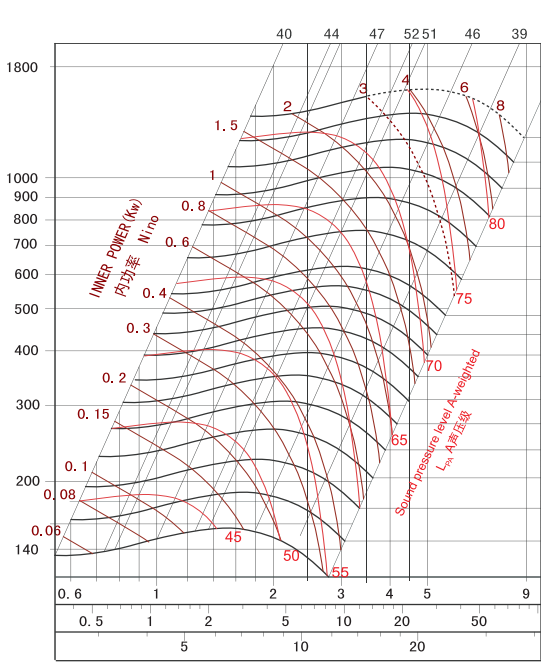
序号	A. 水平风, 水平出	出口管道正确接法	检修门方向	序号	B. 水平风, 上出口	出口管道正确接法	检修门方向	序号	C. 水平风, 下出口	出口管道正确接法	检修门方向	
A1			面朝风机进风口, 目视方向与气流方向相同, 左手侧为左活动面板, 右手侧为右活动面板。 活动面板用于风机检修, 风机运行时禁止打开。	B1			面朝风机进风口, 目视方向与气流方向相同, 左手侧为左活动面板, 右手侧为右活动面板。 活动面板用于风机检修, 风机运行时禁止打开。	C1			面朝风机进风口, 目视方向与气流方向相同, 左手侧为左活动面板, 右手侧为右活动面板。 活动面板用于风机检修, 风机运行时禁止打开。	
A2				B2				C2				
A3				B3				C3				
A4				B4				C4				
序号	D. 上送风, 水平出	出口管道正确接法	检修门方向	序号	E. 上送风, 下出风	出口管道正确接法	检修门方向					
D1			人从正面看风机, 目视方向与气流方向相同, 左手侧为左活动面板, 右手侧为右活动面板。 活动面板用于风机检修, 风机运行时禁止打开。	E1			人从正面看风机, 目视方向与气流方向相同, 左手侧为左活动面板, 右手侧为右活动面板。 活动面板用于风机检修, 风机运行时禁止打开。					
D2				E2				E3				
D3				E4								
D4												

C
B

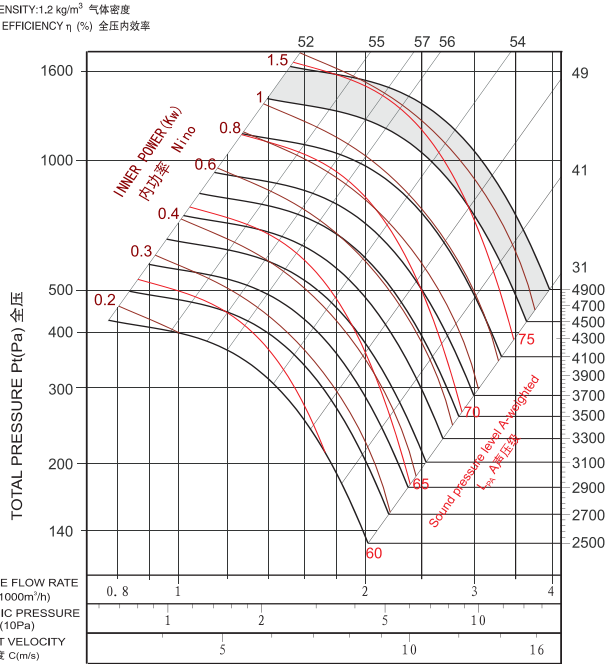
CB-F系列风机进出口方向命名图

序号	A. 水平风, 水平出	出口管道正确接法	检修门方向	序号	B. 水平风, 上出口	出口管道正确接法	检修门方向	序号	C. 水平风, 下出口	出口管道正确接法	检修门方向
A1-			面朝风机进风口, 目视方向与气流方向相同, 左手侧为左活动面板, 右手侧为右活动面板。 活动面板用于风机检修, 风机运行时禁止打开。 电机可两种选择: 1. 在风机箱上方; 2. 电机与风机箱在同一公称高度上。	B1-			面朝风机进风口, 目视方向与气流方向相同, 左手侧为左活动面板, 右手侧为右活动面板。 活动面板用于风机检修, 风机运行时禁止打开。 电机可两种选择: 1. 轴端伸端; 2. 电机轴端与风机轴端平齐	C1-			面朝风机进风口, 目视方向与气流方向相同, 左手侧为左活动面板, 右手侧为右活动面板。 活动面板用于风机检修, 风机运行时禁止打开。 电机可两种选择: 1. 在风机箱上方; 2. 轴端伸端; 3. 电机轴端与风机轴端平齐
A2-				B2-				C2-			
A3-				B3-				C3-			
A4-				B4-				C4-			
序号	D. 上送风, 水平出	出口管道正确接法	检修门方向	序号	E. 上送风, 下出风	出口管道正确接法	检修门方向				
D1-			人从正面看风机, 目视方向与气流方向相同, 左手侧为左活动面板, 右手侧为右活动面板。 活动面板用于风机检修, 风机运行时禁止打开。 电机可两种选择: 1. 轴端伸端; 2. 电机轴端与风机轴端平齐	E1-			人从正面看风机, 目视方向与气流方向相同, 左手侧为左活动面板, 右手侧为右活动面板。 活动面板用于风机检修, 风机运行时禁止打开。 电机可三种选择: 1. 轴端伸端; 2. 电机轴端与风机轴端平齐 3. 电机轴端与风机轴端平齐				
D2-				E2-							
D3-											
D4-											

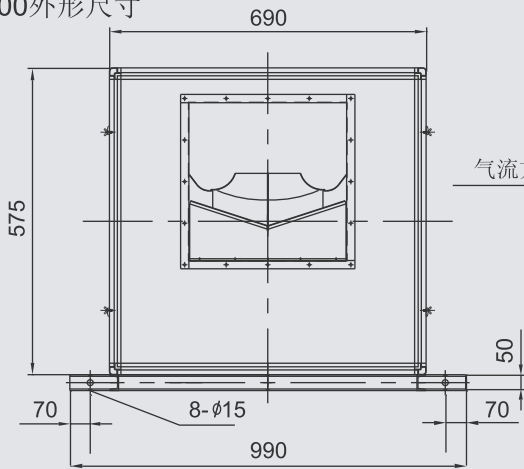
CB/CB-F 200D



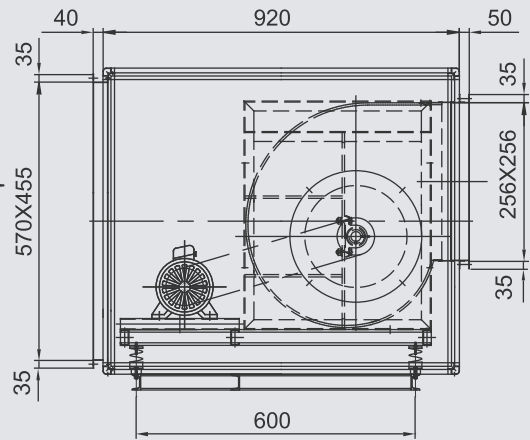
CB/CB-F 200Q



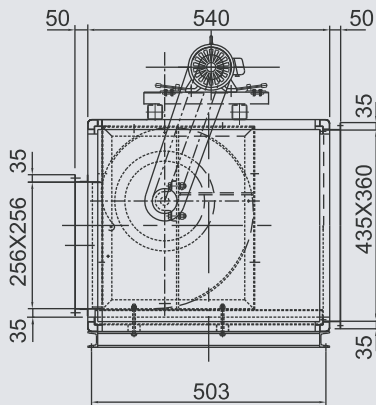
CB 200外形尺寸



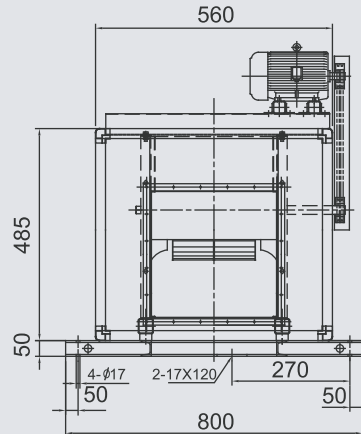
气流方向



CB-F 200外形尺寸



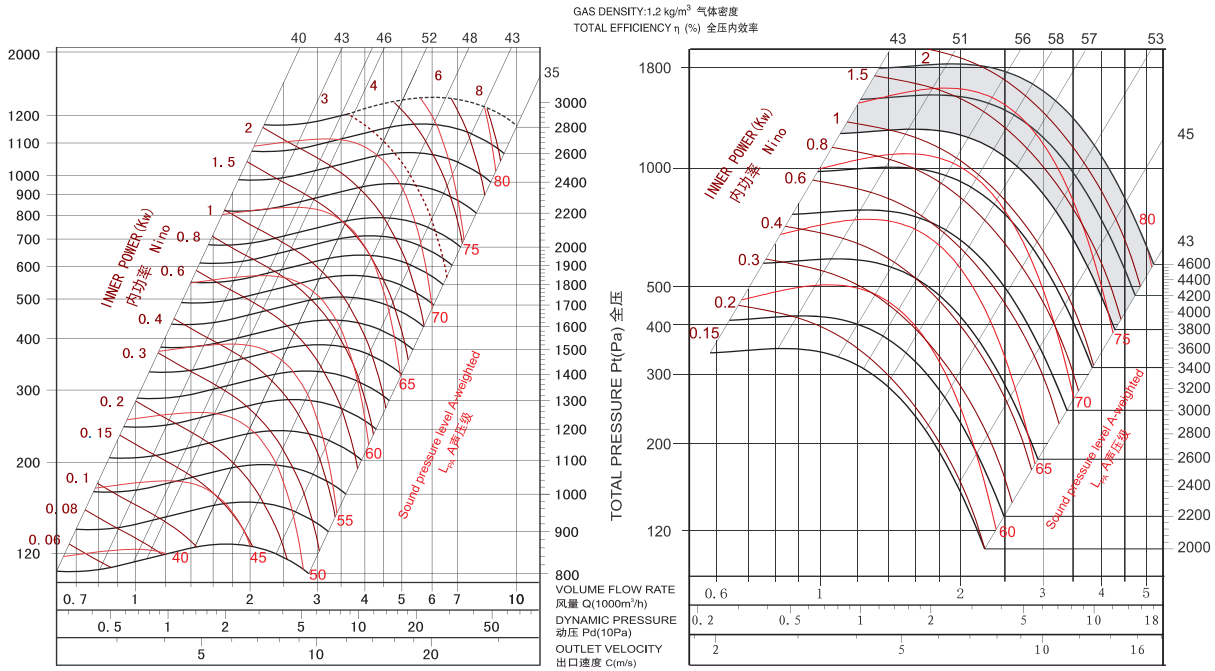
气流方向





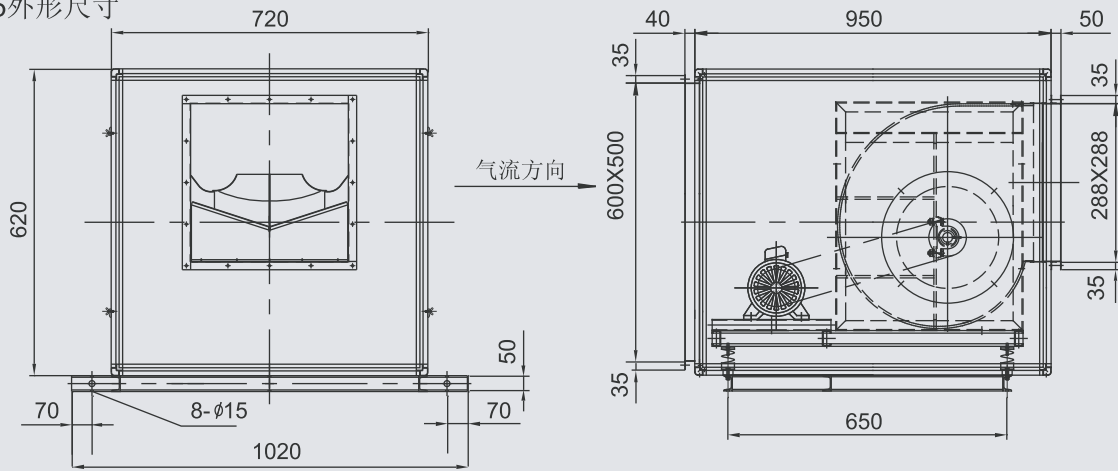
CB/CB-F 225D

CB/CB-F 225Q

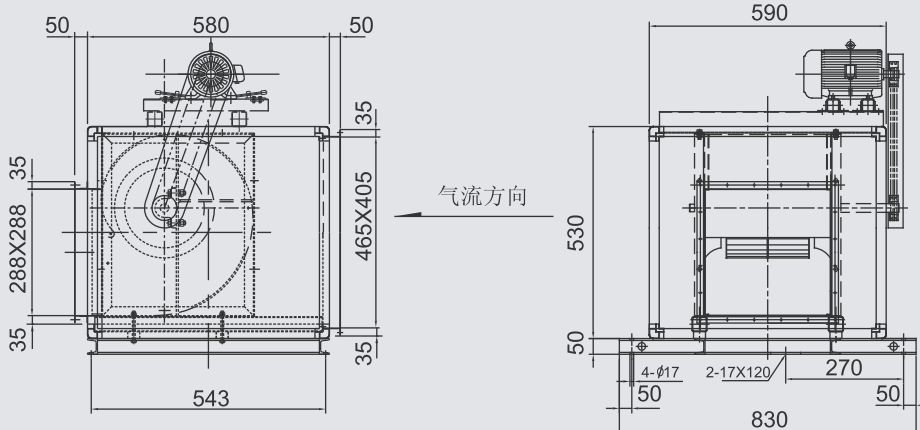


C
B

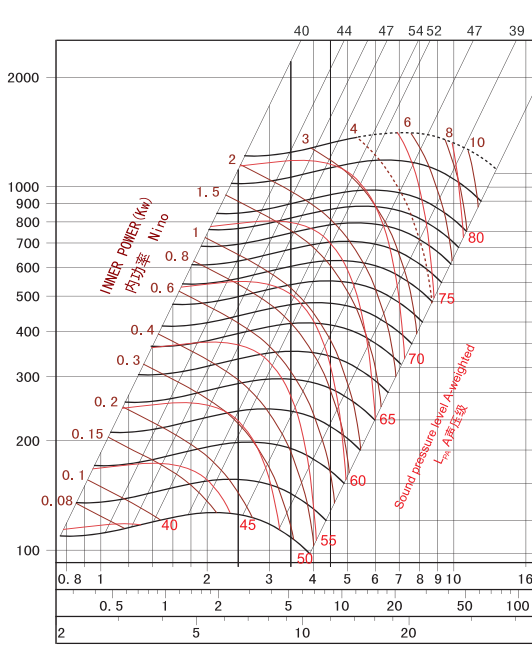
CB 225外形尺寸



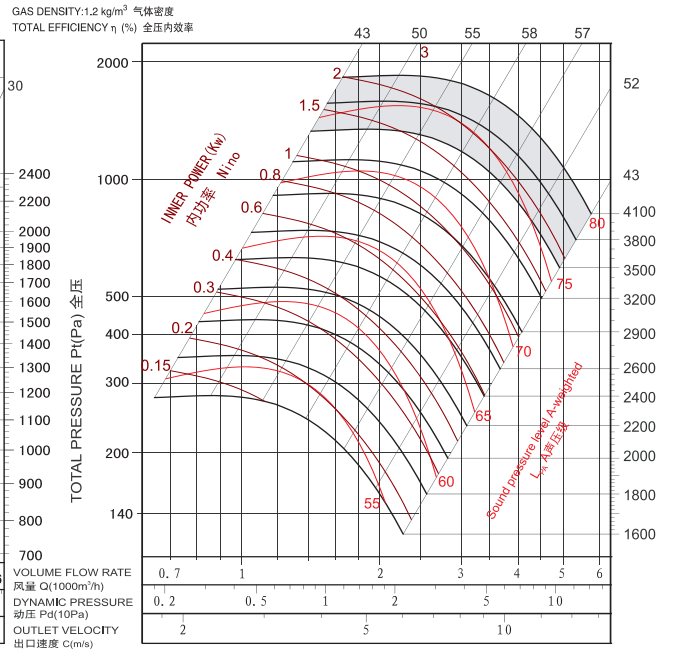
CB-F 225外形尺寸



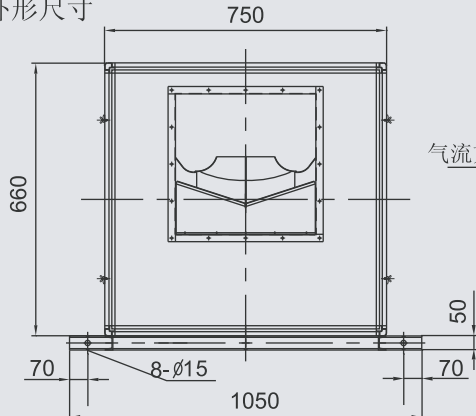
CB/CB-F 250D



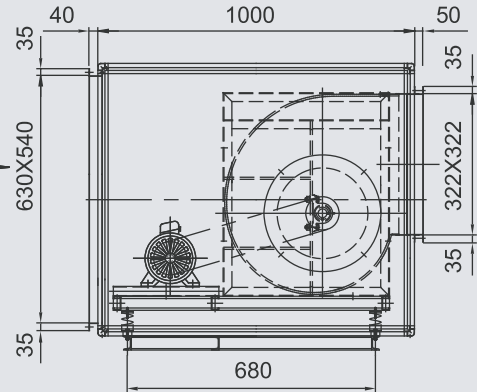
CB/CB-F 250Q



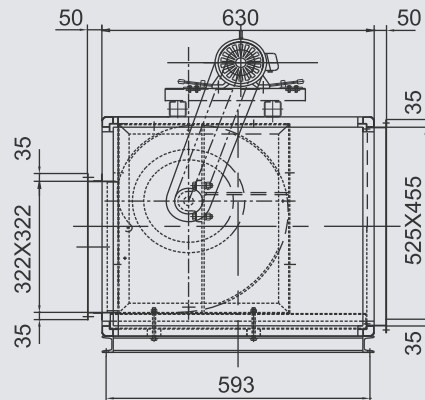
CB 250外形尺寸



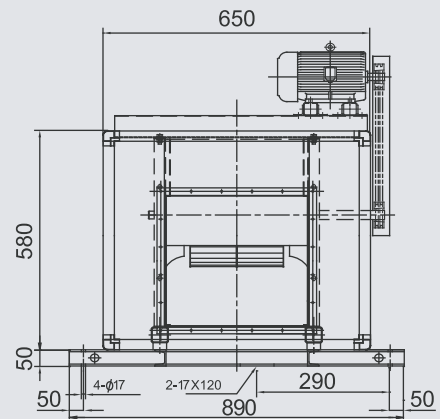
气流方向



CB-F 250外形尺寸

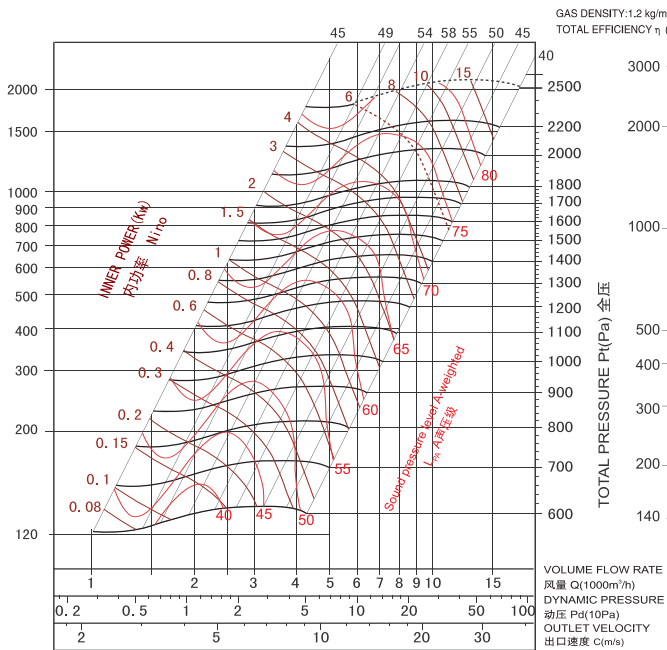


气流方向

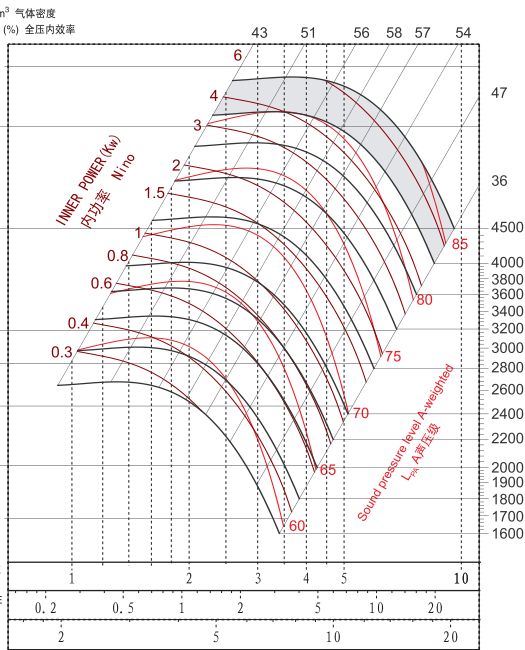




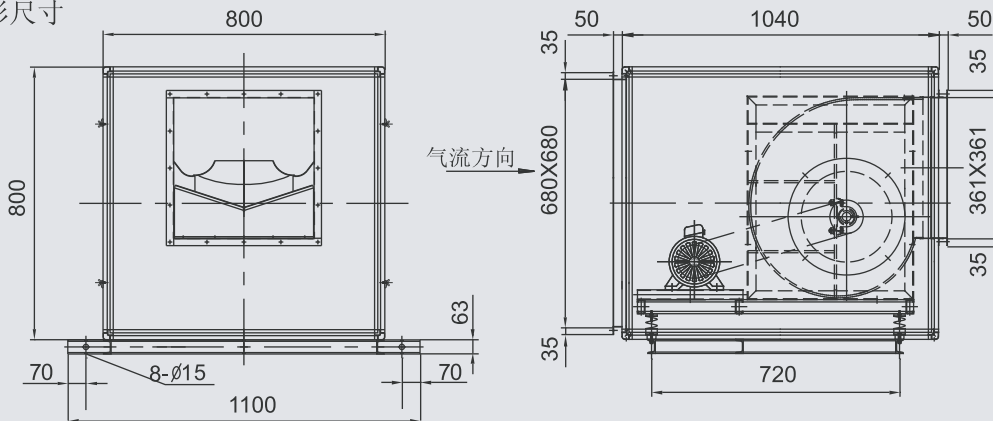
CB/CB-F 280D



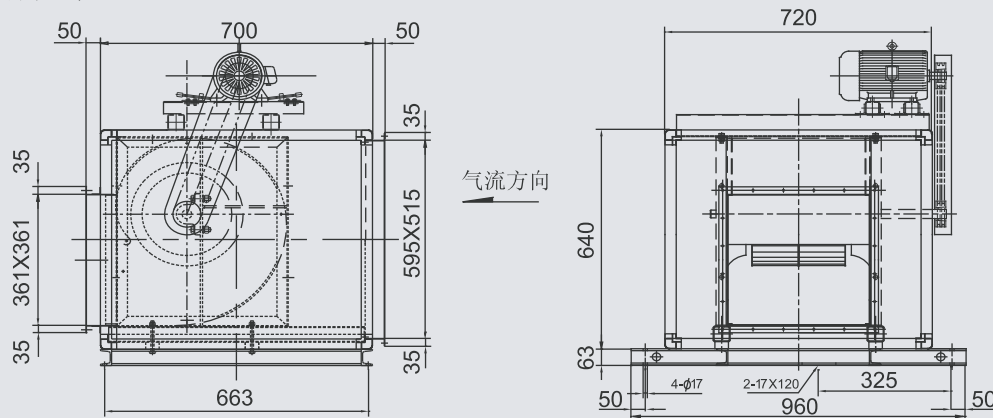
CB/CB-F 280Q



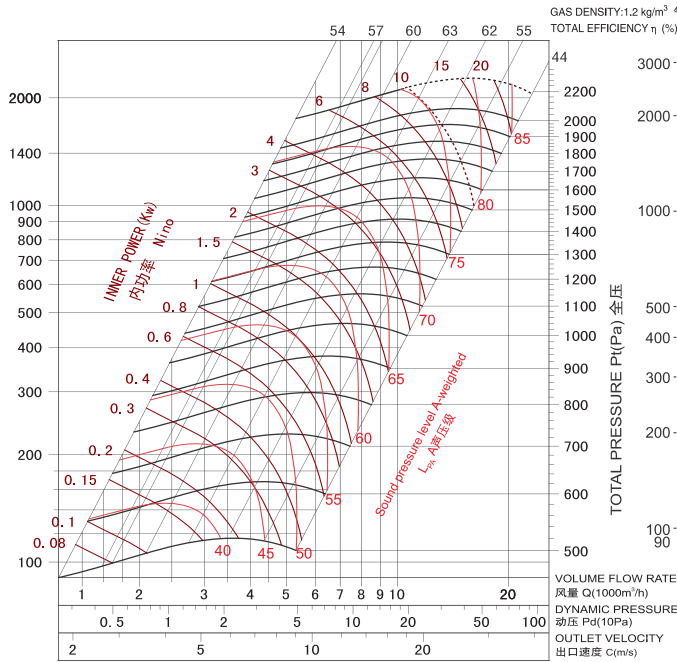
CB 280外形尺寸



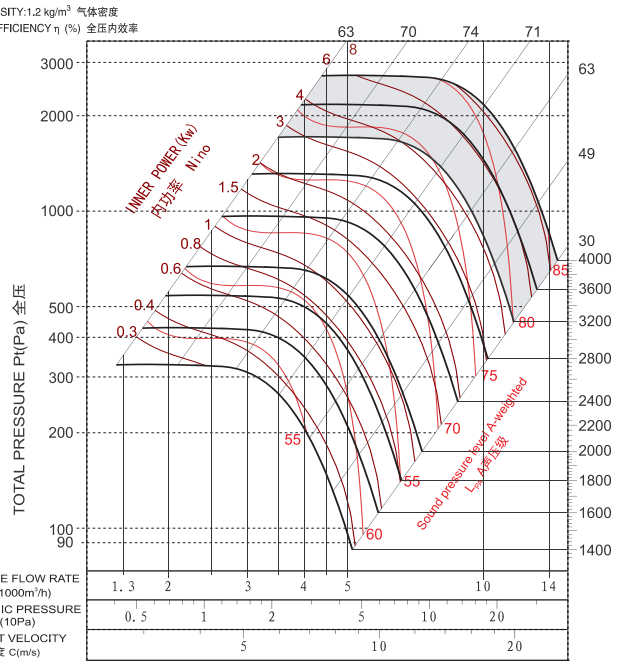
CB-F 280外形尺寸



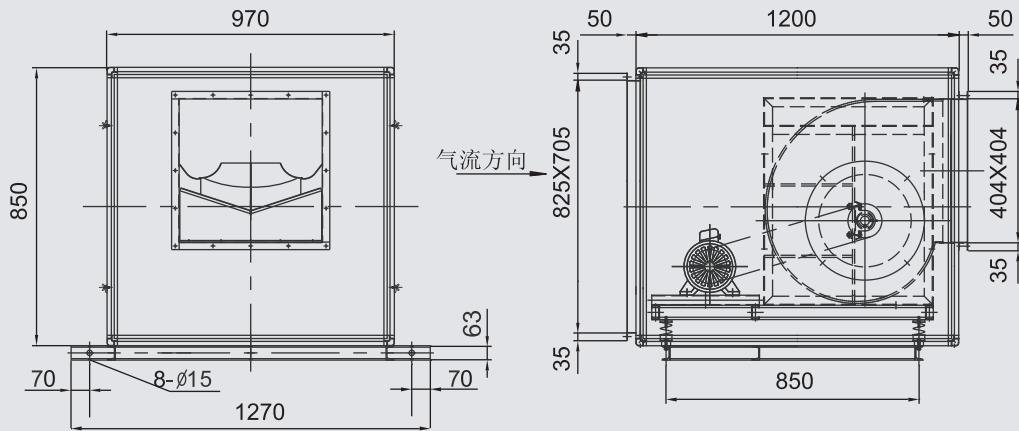
CB/CB-F 315D



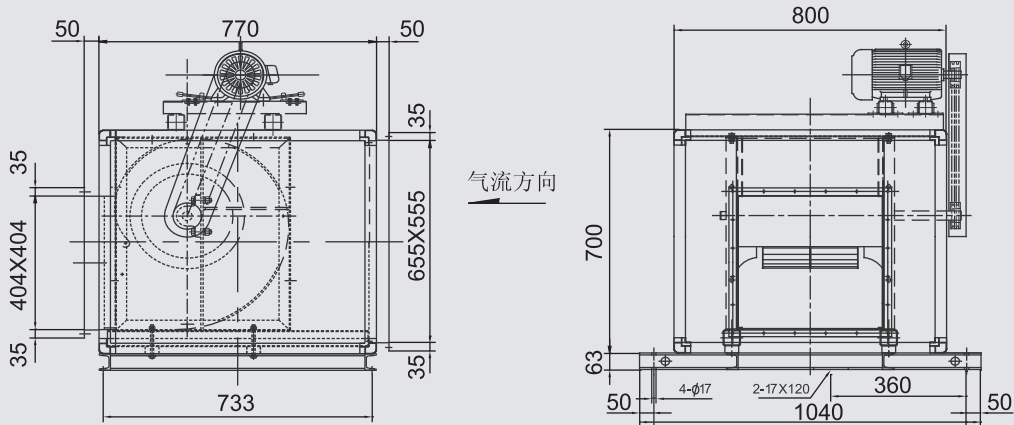
CB/CB-F 315Q



CB 315外形尺寸

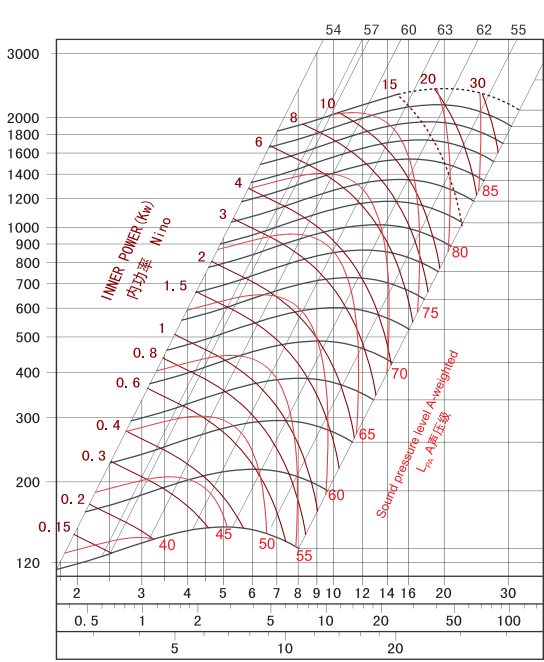


CB-F 315外形尺寸

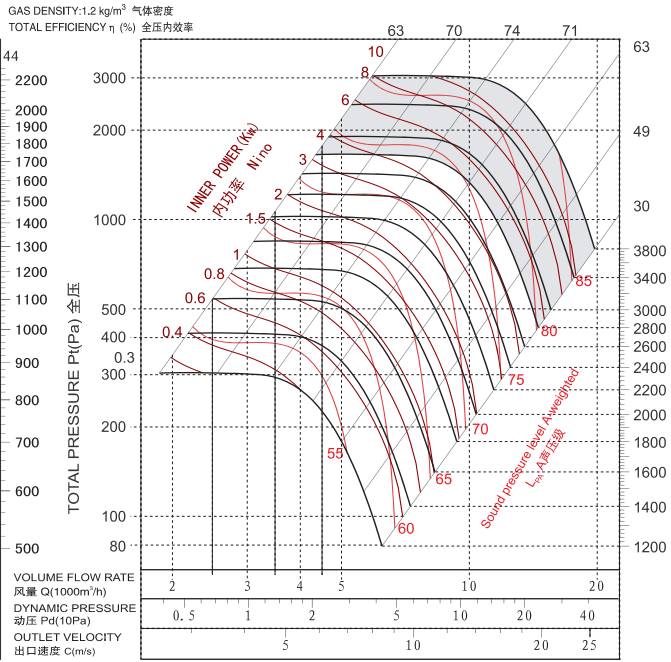




CB/CB-F 355D

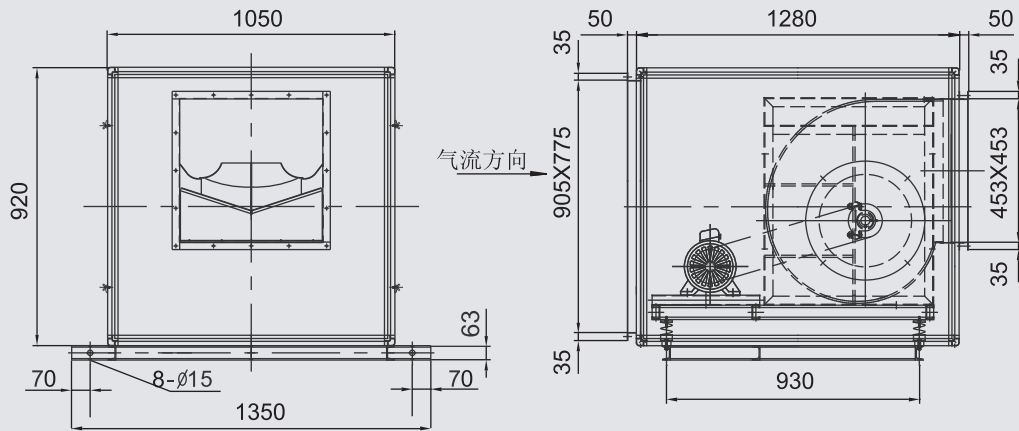


CB/CB-F 355Q

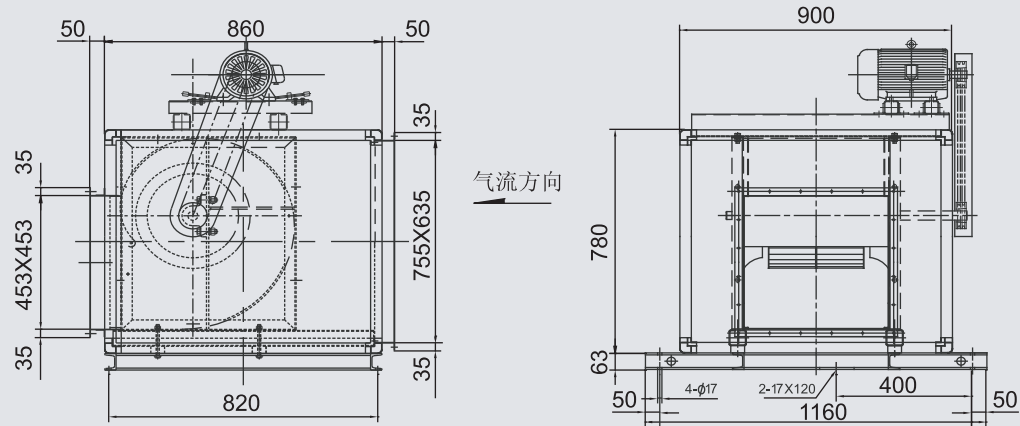


C
B

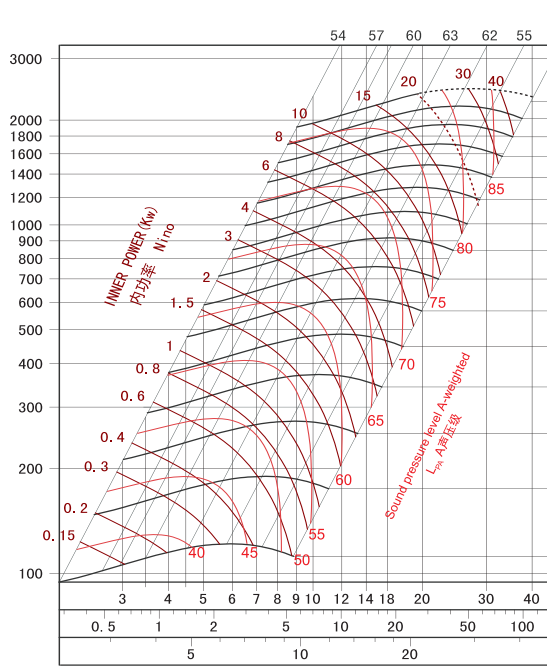
CB 355外形尺寸



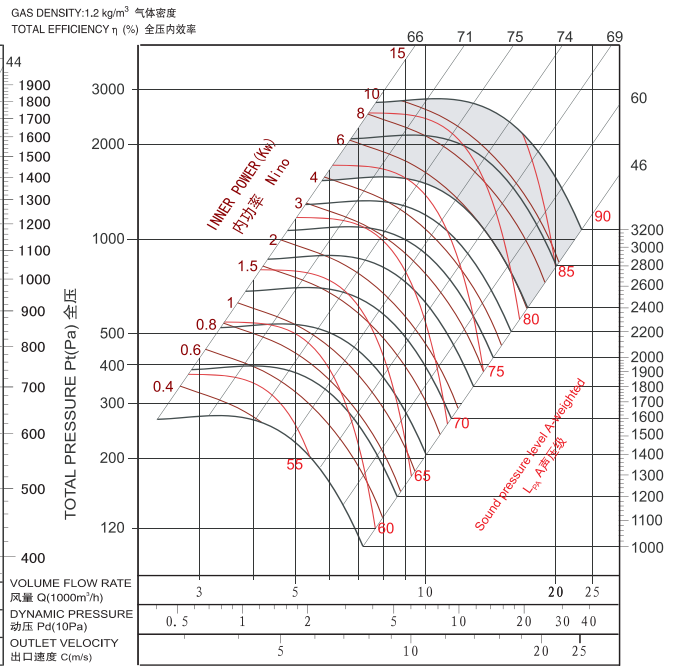
CB-F 355外形尺寸



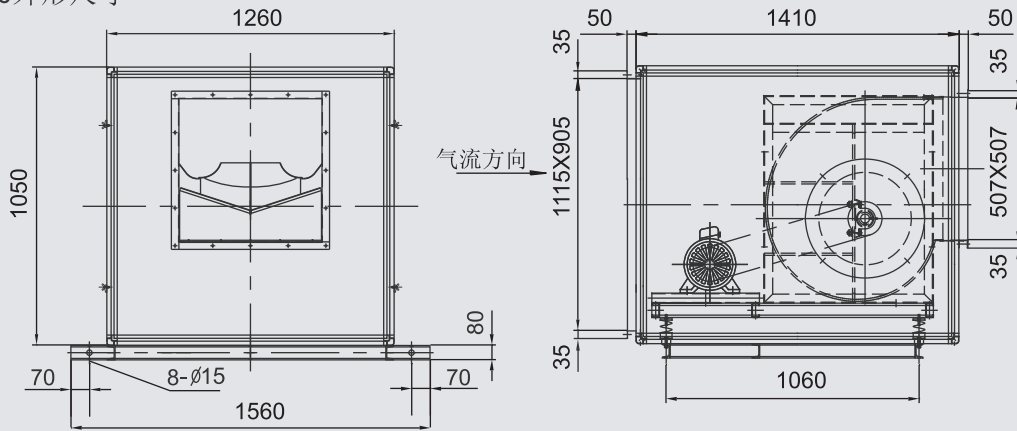
CB/CB-F 400D



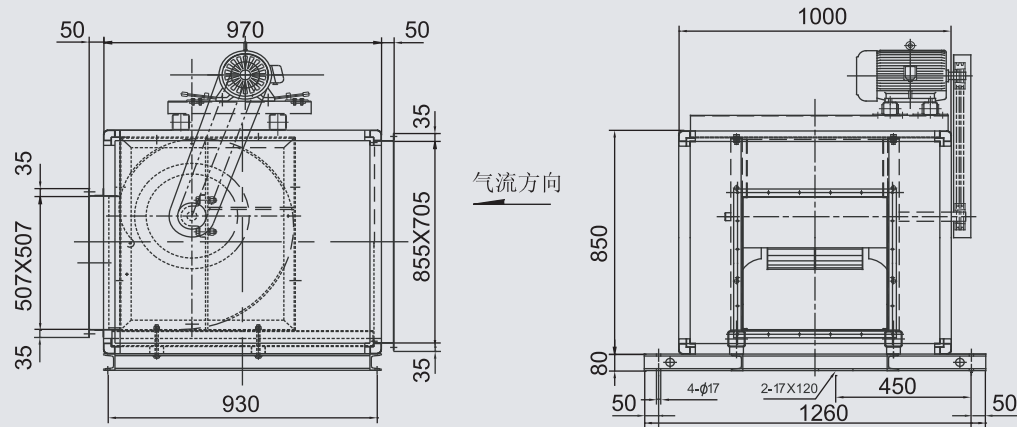
CB/CB-F 400Q



CB 400外形尺寸

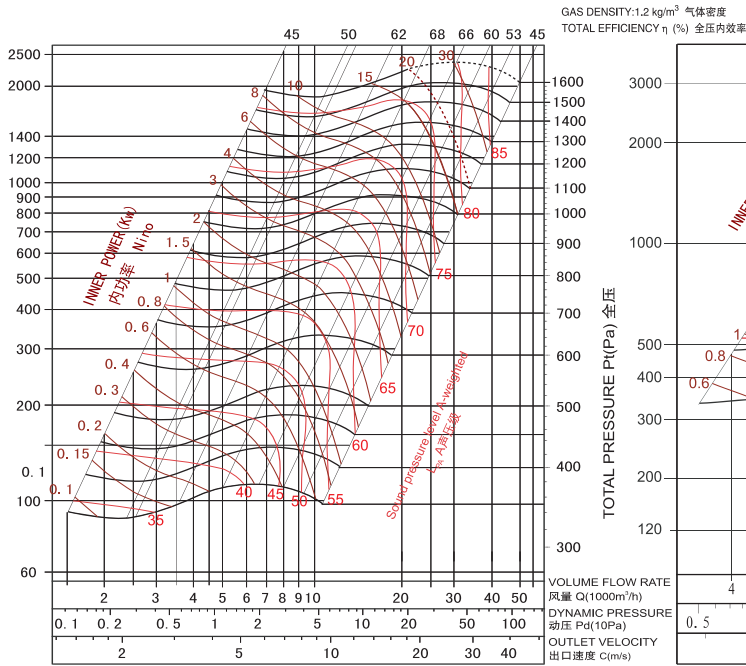


CB-F 400外形尺寸

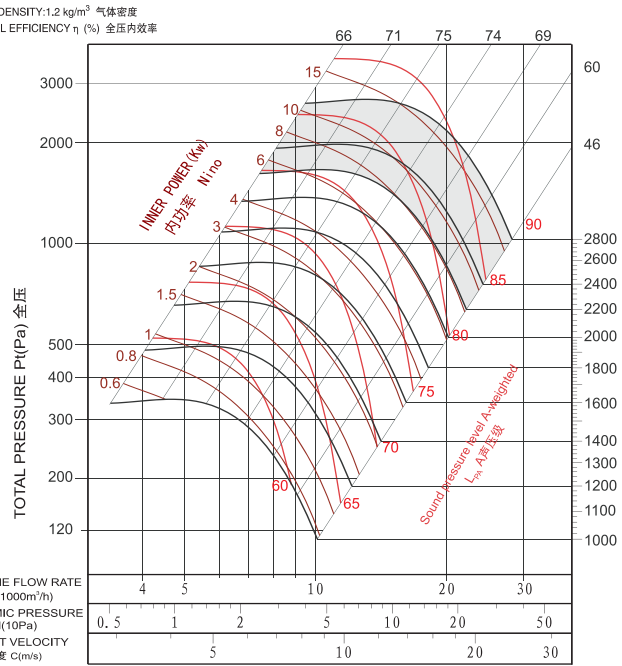




CB/CB-F 450D

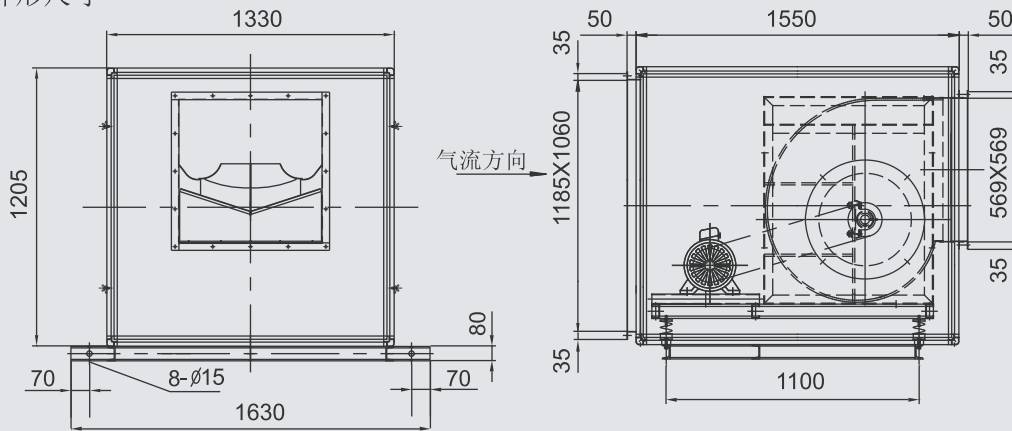


CB/CB-F 450Q

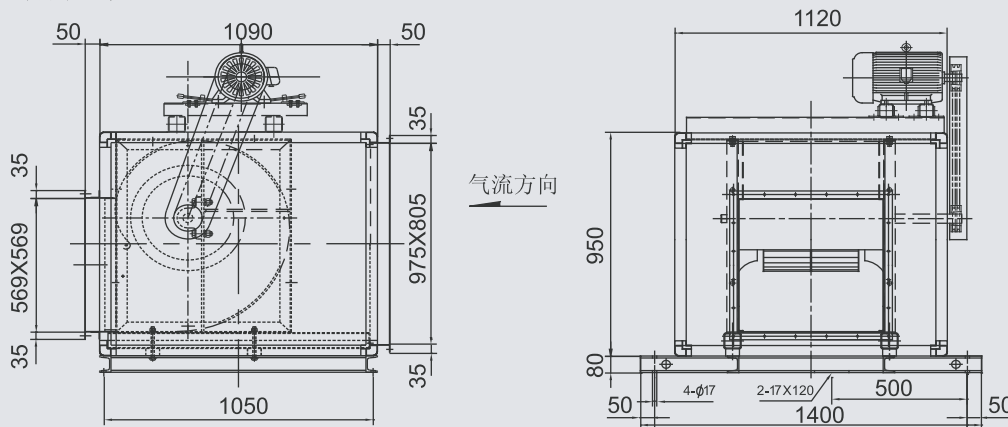


C
B

CB 450外形尺寸

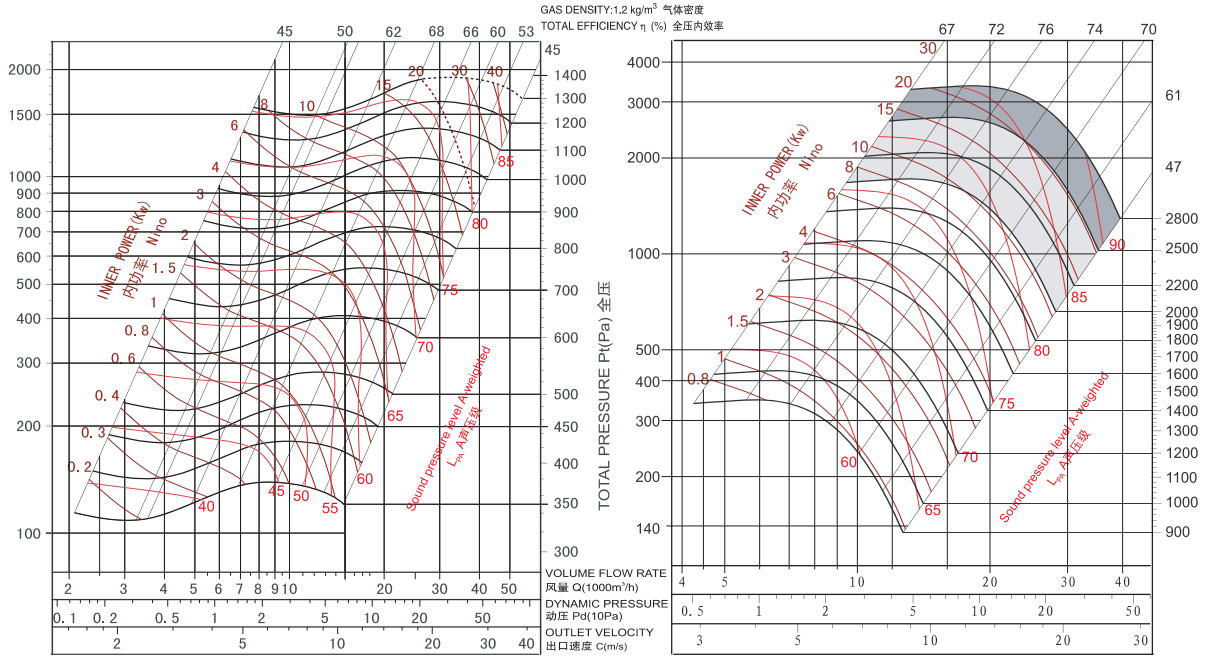


CB-F 450外形尺寸

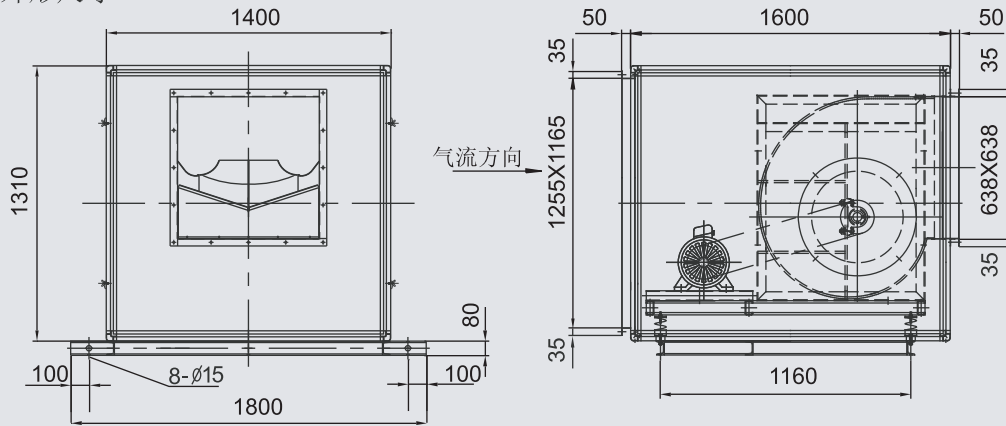


CB/CB-F 500D

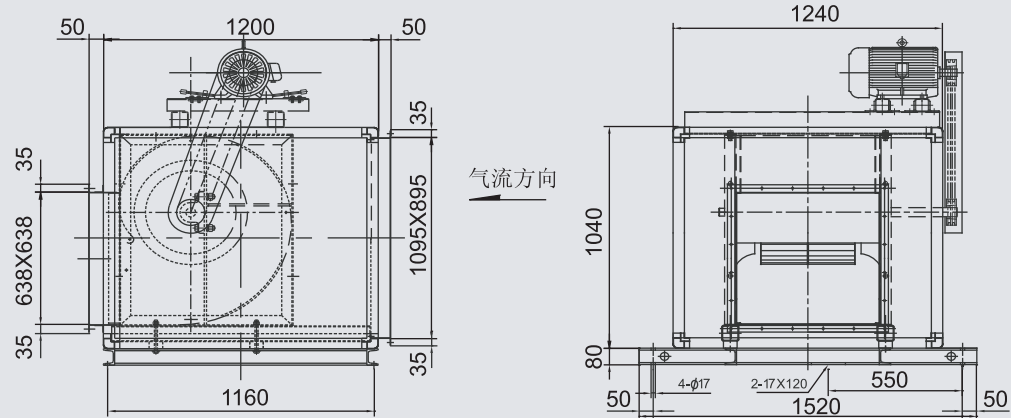
CB/CB-F 500Q



CB 500外形尺寸



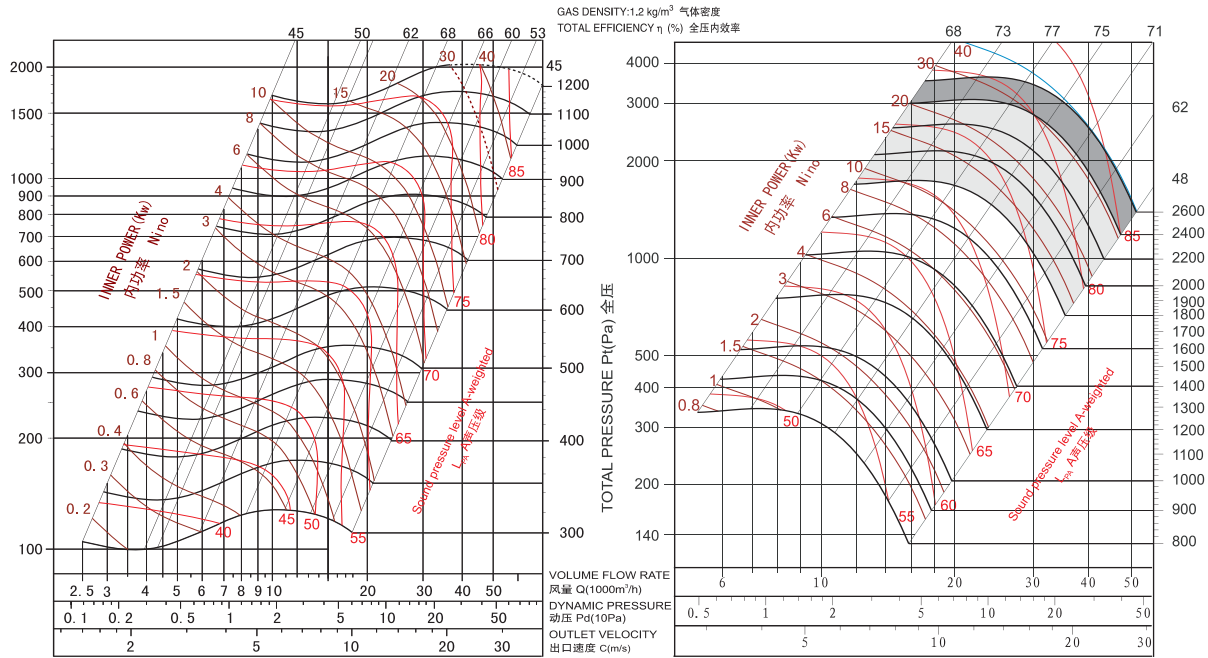
CB-F 500外形尺寸





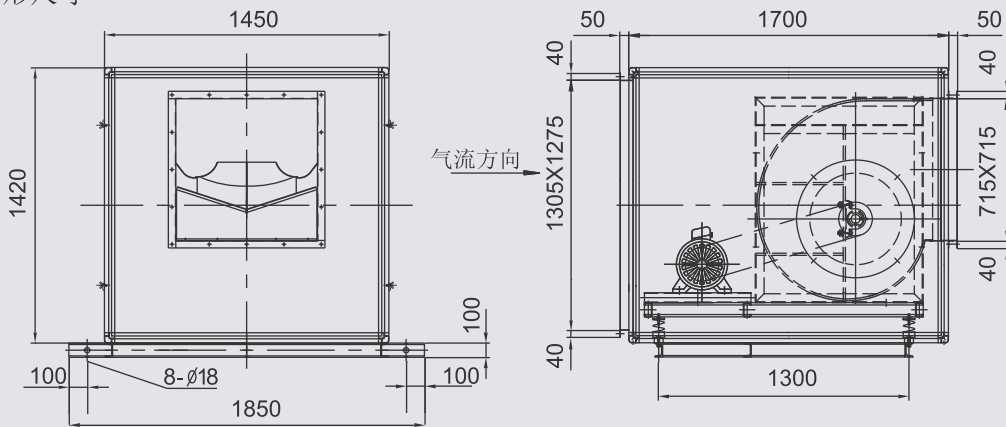
CB/CB-F 560D

CB/CB-F 560Q

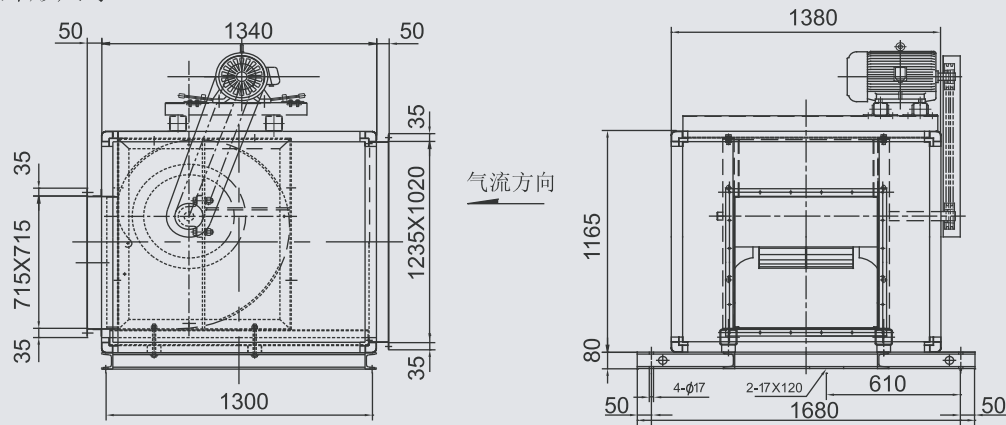


C
B

CB 560外形尺寸

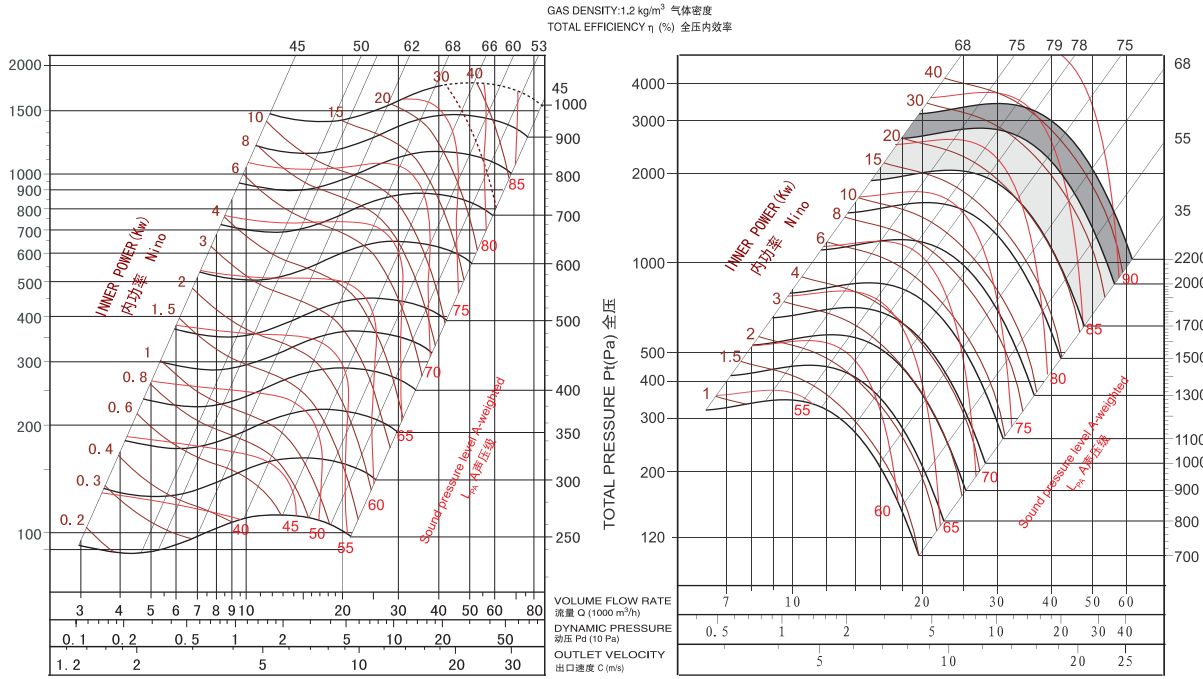


CB-F 560外形尺寸

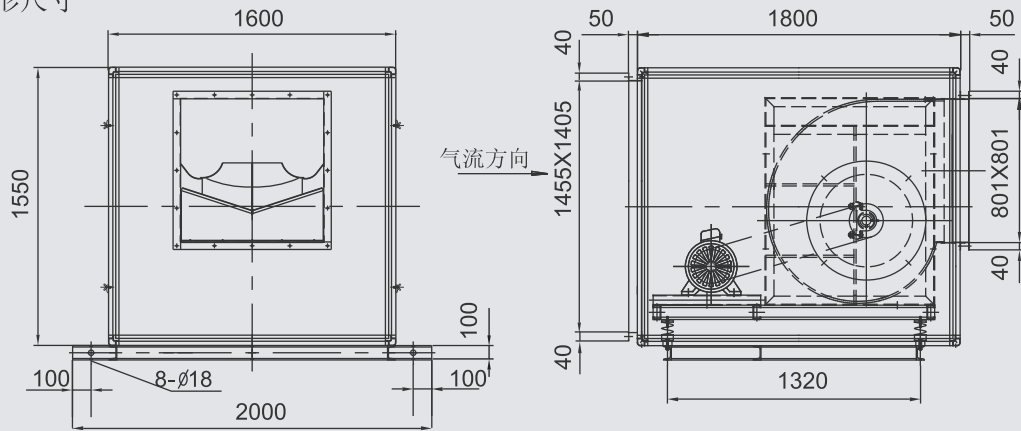


CB/CB-F 630D

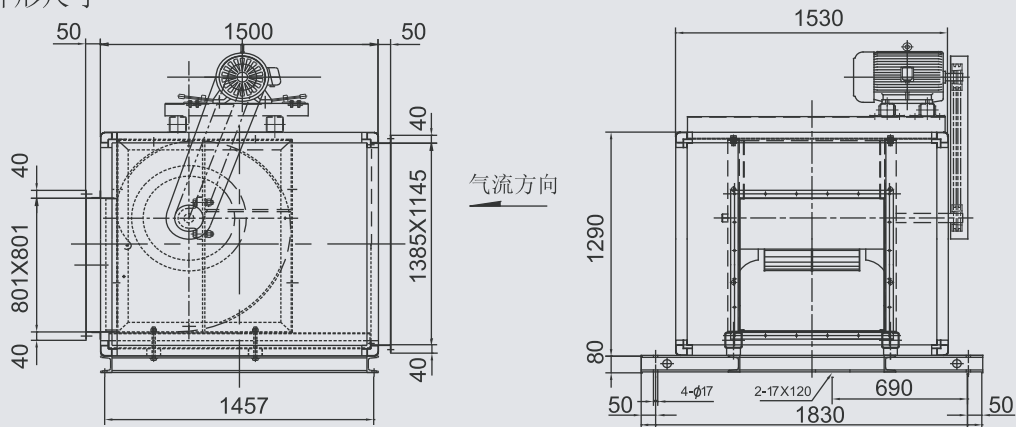
CB/CB-F 630Q



CB 630外形尺寸



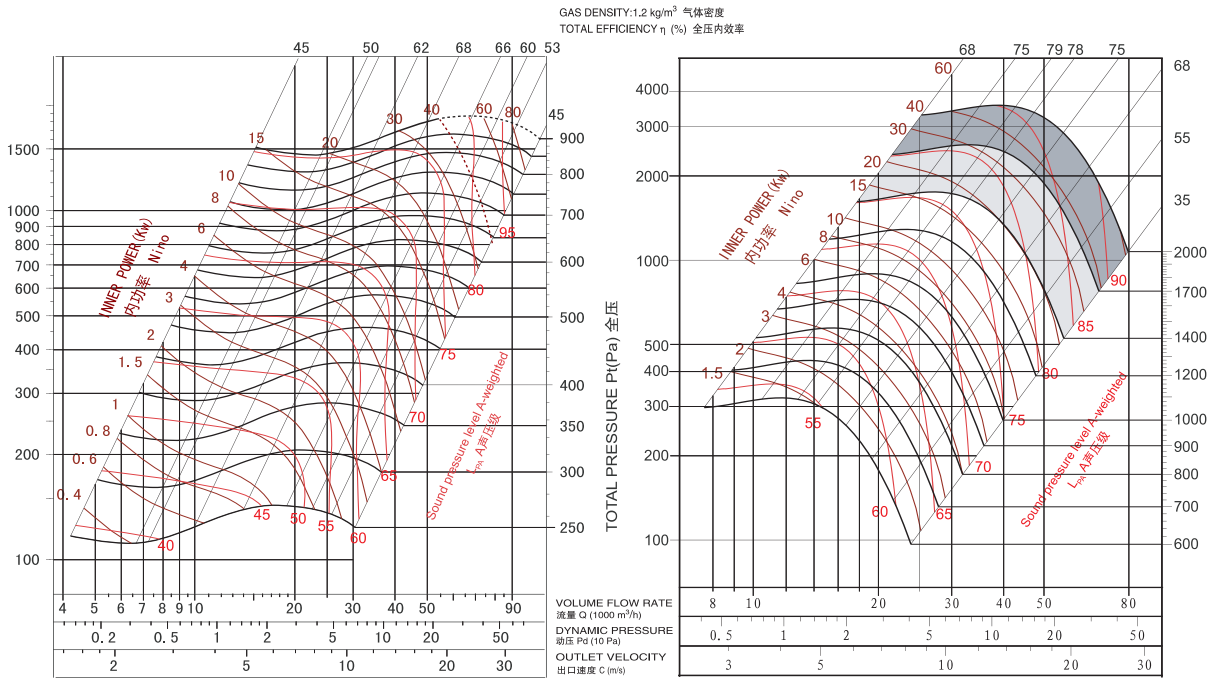
CB-F 630外形尺寸





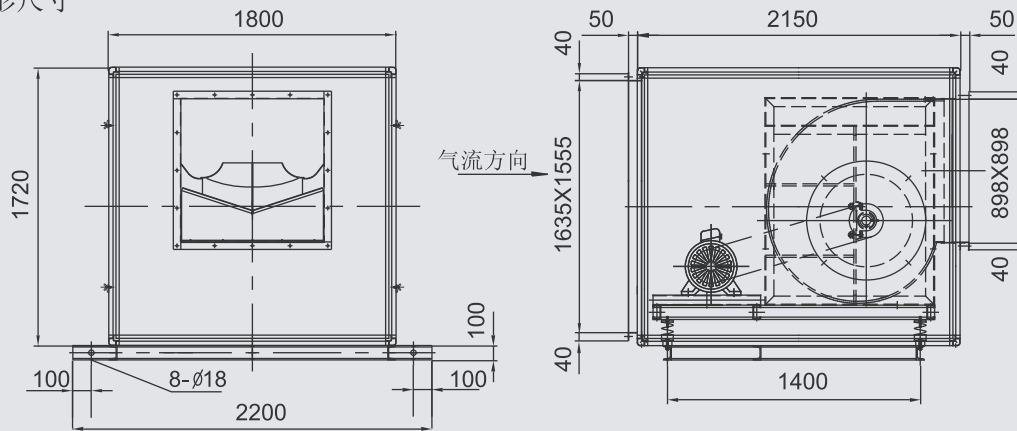
CB/CB-F 710D

CB/CB-F 710Q

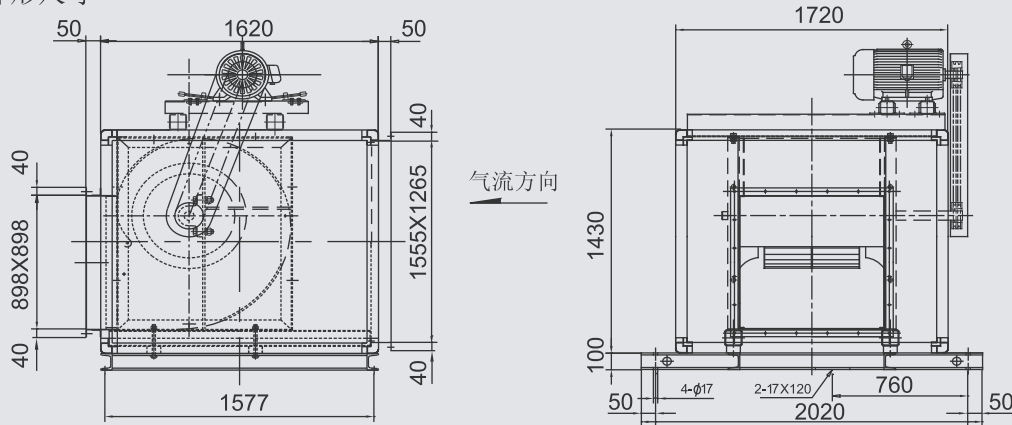


C
B

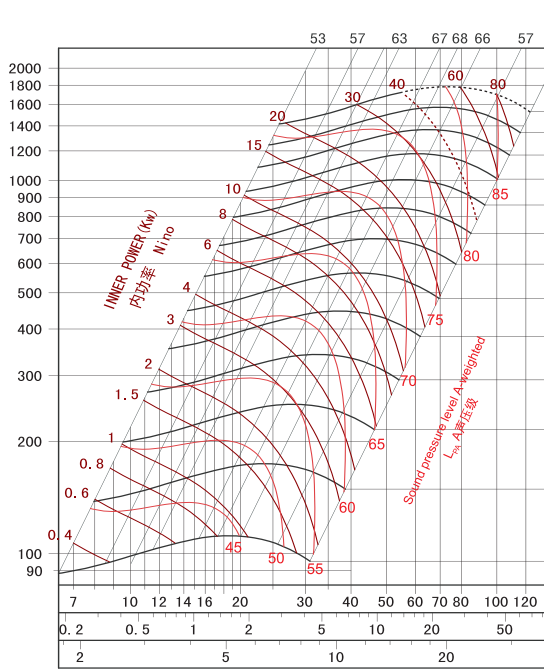
CB 710外形尺寸



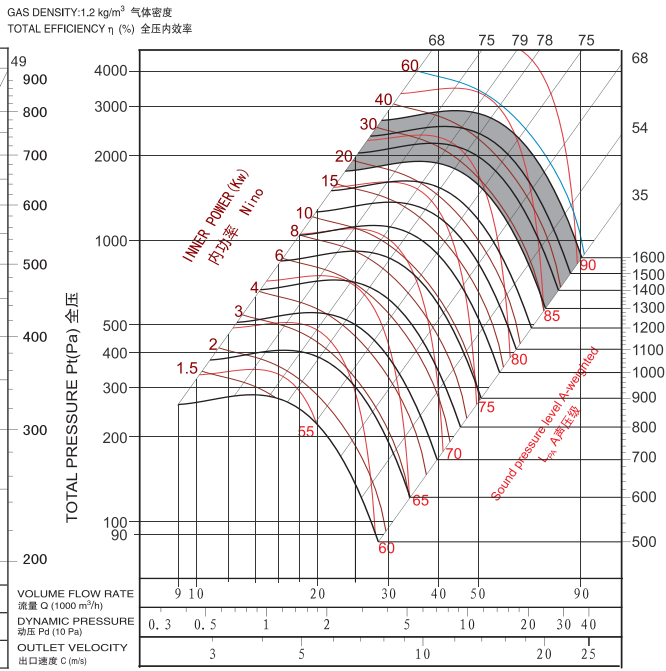
CB-F 710外形尺寸



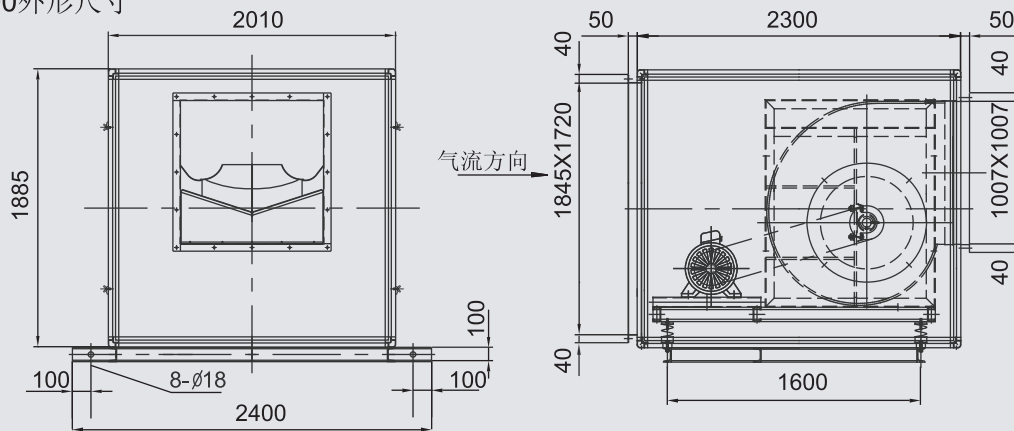
CB/CB-F 800D



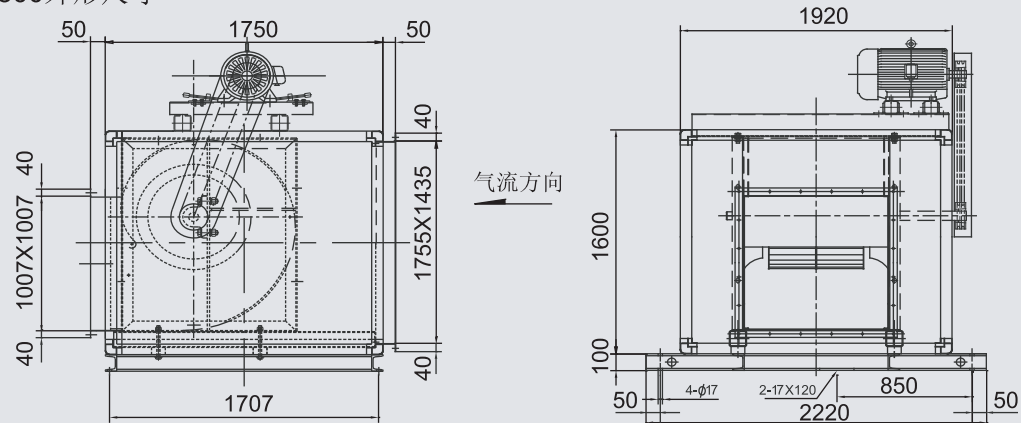
CB/CB-F 800Q



CB 800外形尺寸



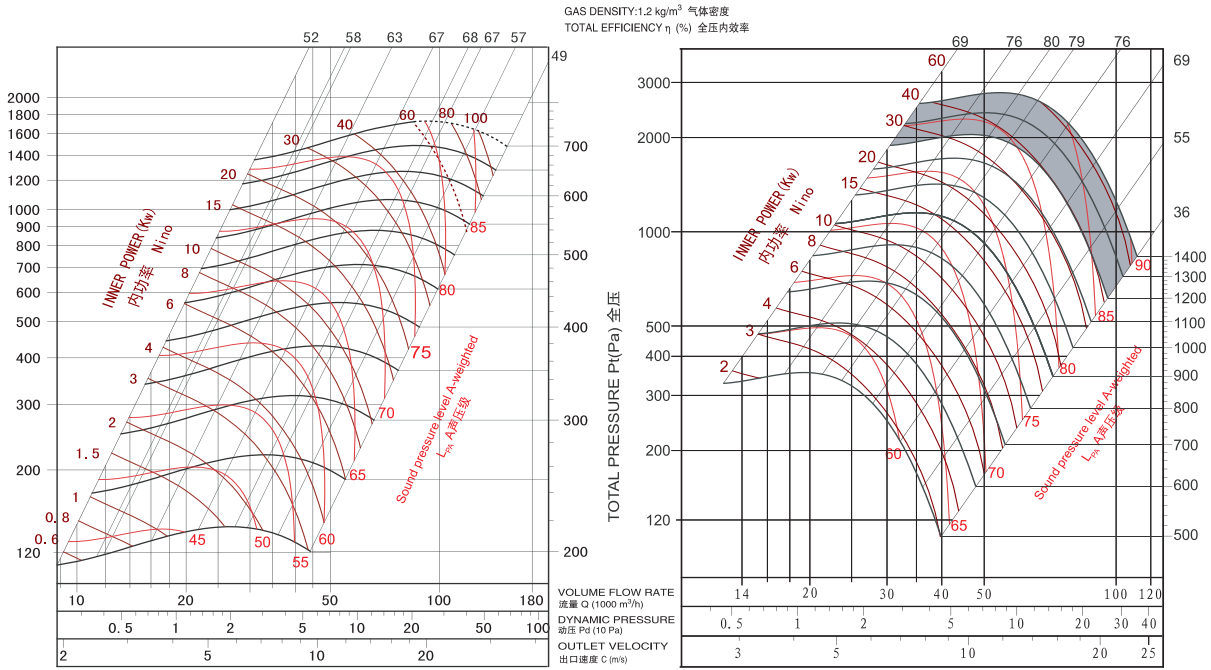
CB-F 800外形尺寸





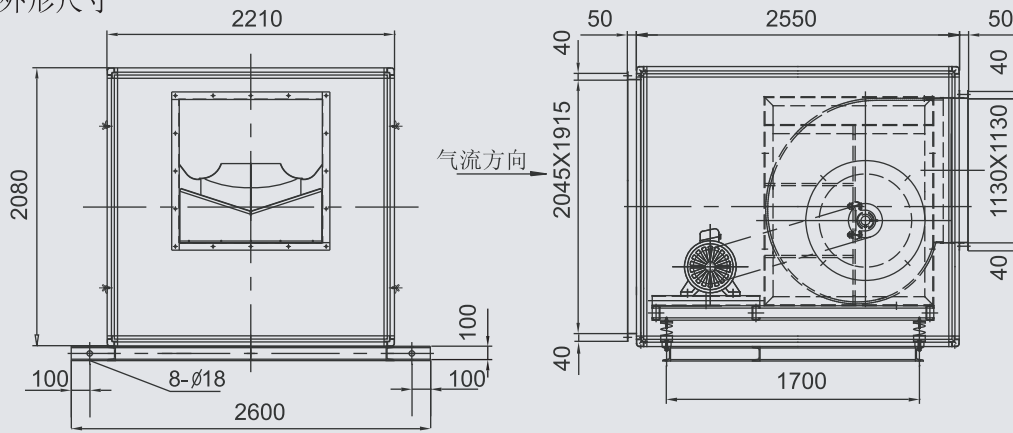
CB/CB-F 900D

CB/CB-F 900Q

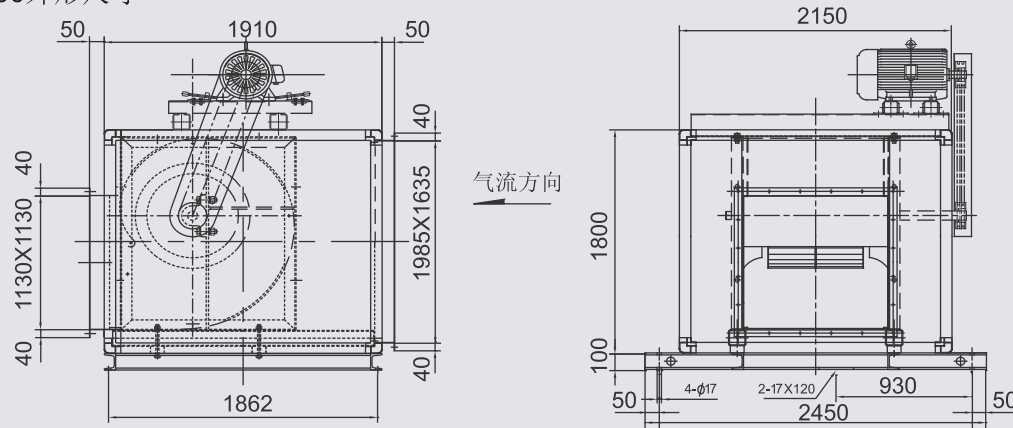


C
B

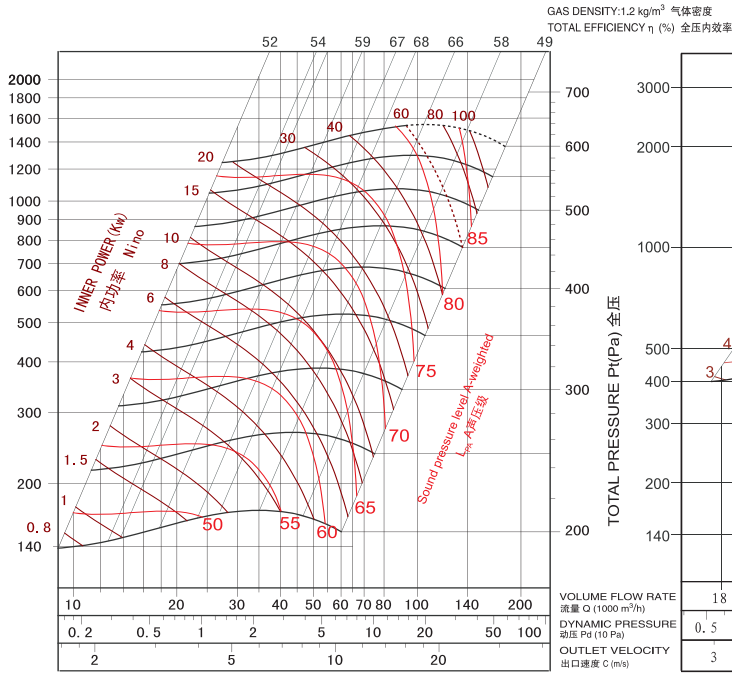
CB 900外形尺寸



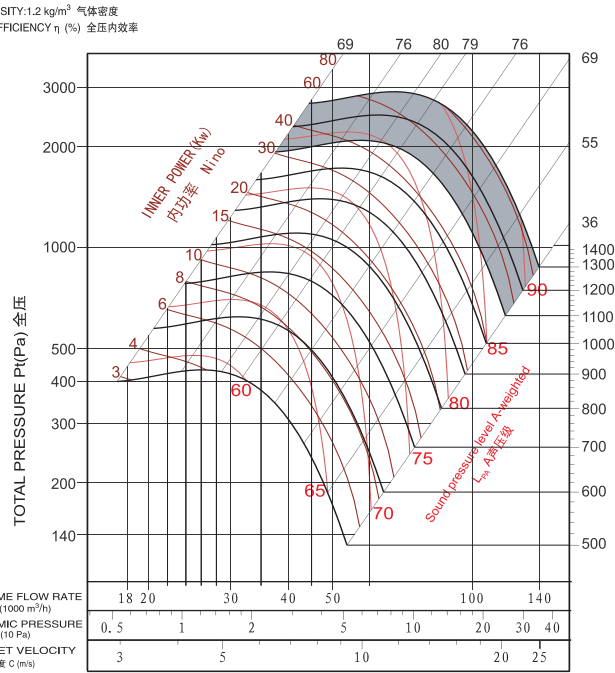
CB-F 900外形尺寸



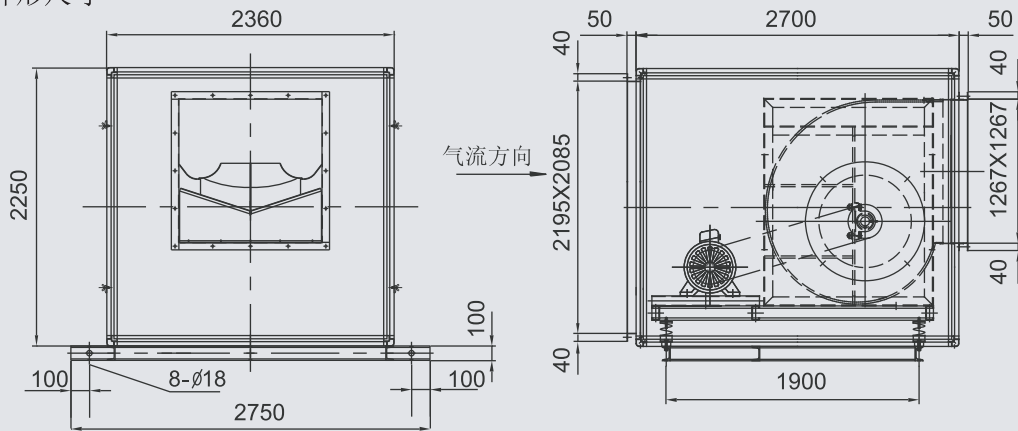
CB/CB-F 1000D



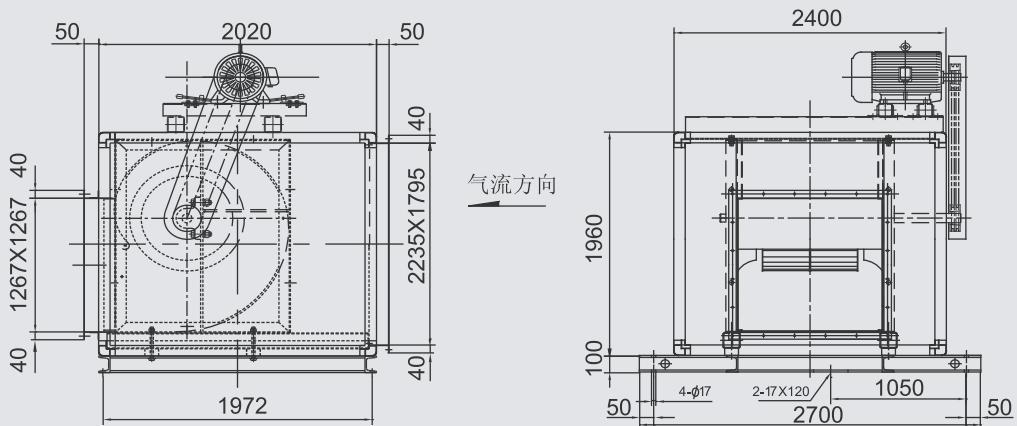
CB/CB-F 1000Q



CB 1000外形尺寸



CB-F 1000外形尺寸





D 系列风机运行极限

D Series Ventilator Operational Limits

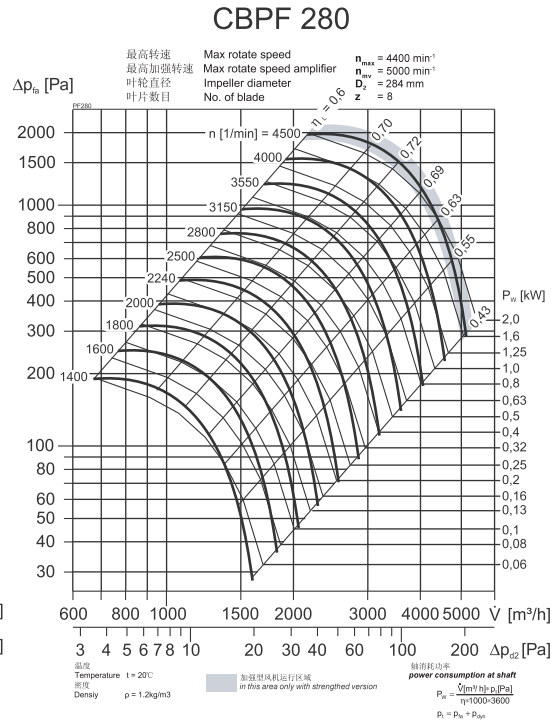
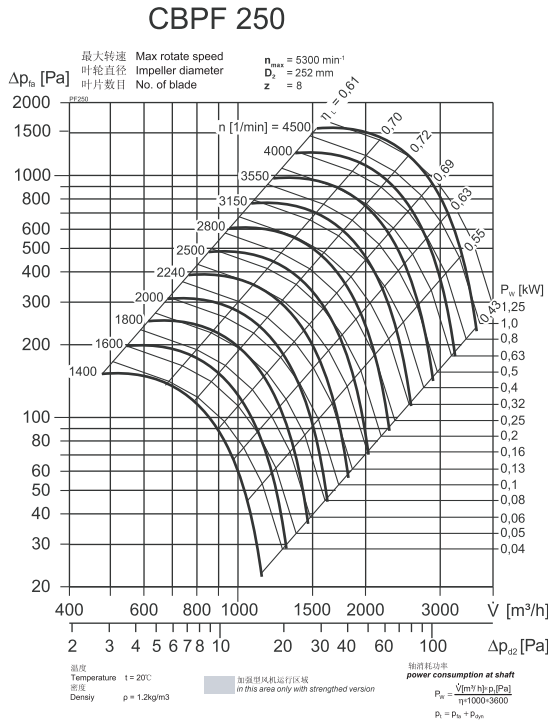
			200	225	250	280	315	355	400	450	500	560	630	710	800	900	1000
极限吸收功率 Max. absorbed Power	L	Kw	3	3	4	/	/	/	/	/	/	/	/	/	/	/	/
	R	Kw	3	3	4	4	6	6	8	10	10	10	15	15	/	/	/
	K	Kw	/	/	/	6	10	15	20	20	20	30	30	40	40	60	60
极限转速 Max.R.P.M	L	rpm	3200	2800	2400	/	/	/	/	/	/	/	/	/	/	/	/
	R	rpm	3200	2800	2400	2200	1900	1600	1400	1300	1100	900	800	700	/	/	/
	K	rpm	/	/	/	2500	2200	2000	1800	1600	1300	1200	1000	900	800	700	600
极限温度 (最低-20℃) Air Temperature Limits(Min.-20℃)	L	Max.℃	85	85	85	/	/	/	/	/	/	/	/	/	/	/	/
	R	Max.℃	85	85	85	85	85	85	85	85	85	85	85	85	85	85	85
	K	Max.℃	/	/	/	85	85	85	85	85	85	85	85	85	85	85	85
风机重量 Fan Weight	L	Kg	7.4	9.2	11	/	/	/	/	/	/	/	/	/	/	/	/
	R	Kg	9.4	10.8	13	19	25	36	44	57	71.5	131	156	192	/	/	/
	K	Kg	/	/	/	29	35	42	57	72	92	160	185	240	290	365	480

C
B

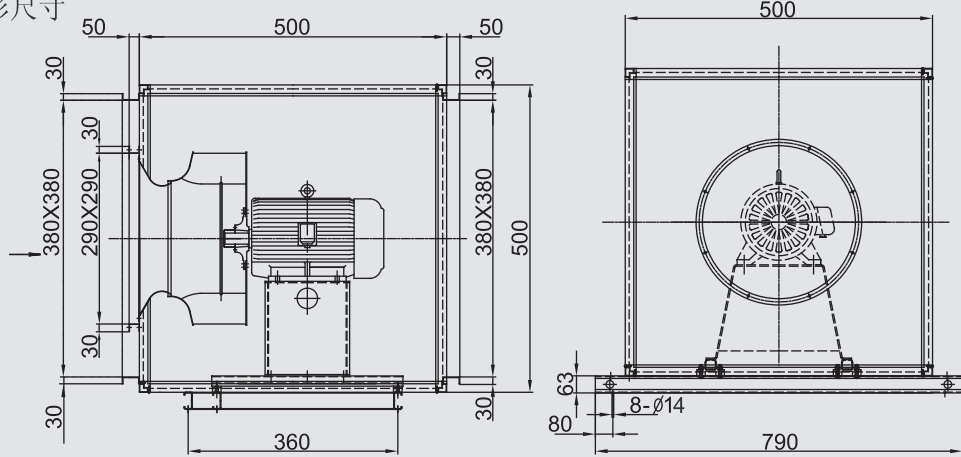
Q 系列风机运行极限

Q Series Ventilator Operational Limits

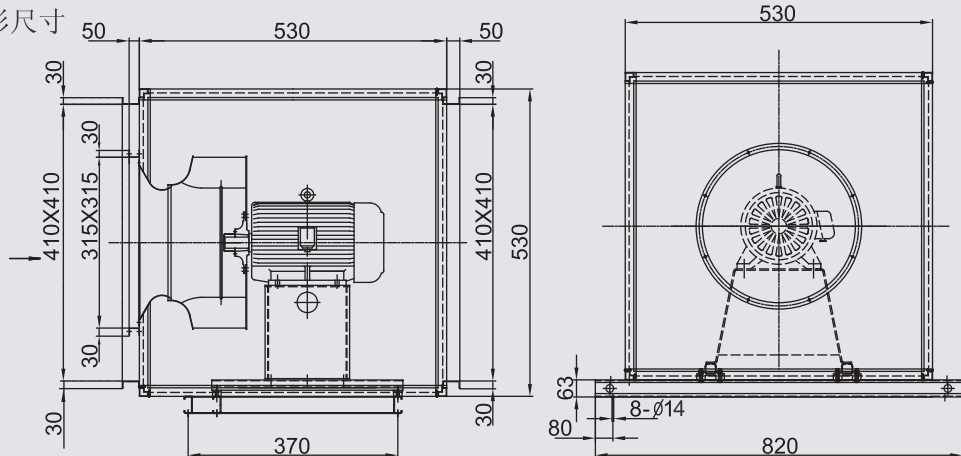
			200	225	250	280	315	355	400	450	500	560	630	710	800	900	1000
极限吸收功率 Max. absorbed Power	L	KW	1.5	1.5	2	/	/	/	/	/	/	/	/	/	/	/	/
	R	KW	2	3	3	5.5	4.8	5.5	6.0	8.0	12	14	20	20	/	/	/
	K	KW	/	/	/	8	8	15	15	15	22	30	35	40	30	43	55
	Z	KW	/	/	/	/	/	/	/	/	30	38.5	40	60	65	65	80
极限转速 Max.R.P.M	L	rpm	4500	3800	3500	/	/	/	/	/	/	/	/	/	/	/	/
	R	rpm	4900	4500	4100	4000	3200	2800	2400	2200	2000	1800	1700	1400	/	/	/
	K	rpm	/	/	/	4500	4000	3800	3200	2800	2500	2400	2000	1700	1300	1200	1100
	Z	rpm	/	/	/	/	/	/	/	/	2800	2600	2200	2000	1600	1400	1300
极限温度 (最低-20℃) Air Temperature Limits (Min.-20℃)	L	Max.	85	85	85	/	/	/	/	/	/	/	/	/	/	/	/
	R	℃	85	85	85	85	85	85	85	85	85	85	85	85	/	/	/
	K	Max.	/	/	/	85	85	85	85	85	85	85	85	85	85	85	85
	Z	℃	/	/	/	/	/	/	/	/	85	85	85	85	85	85	85
风机重量 Fan Weight	L	Kg	8	10	16	/	/	/	/	/	/	/	/	/	/	/	/
	R	Kg	10	12	18	22	32.6	42.7	50.6	67.5	84.2	142	168	223	/	/	/
	K	Kg	/	/	/	32	42.6	54.7	63.6	82.5	104.2	171	197	271	300	481.5	530
	Z	Kg	/	/	/	/	/	/	/	/	107	174	200	274	304	485	535



CBPF 250外形尺寸

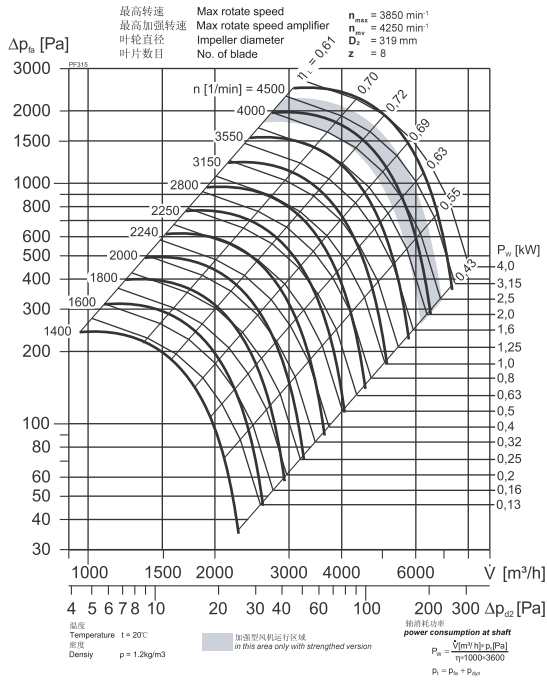


CBPF 280外形尺寸

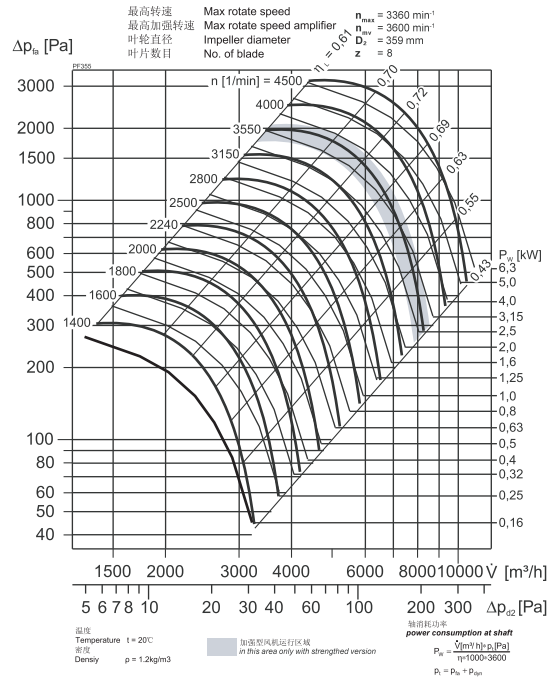




CBPF 315

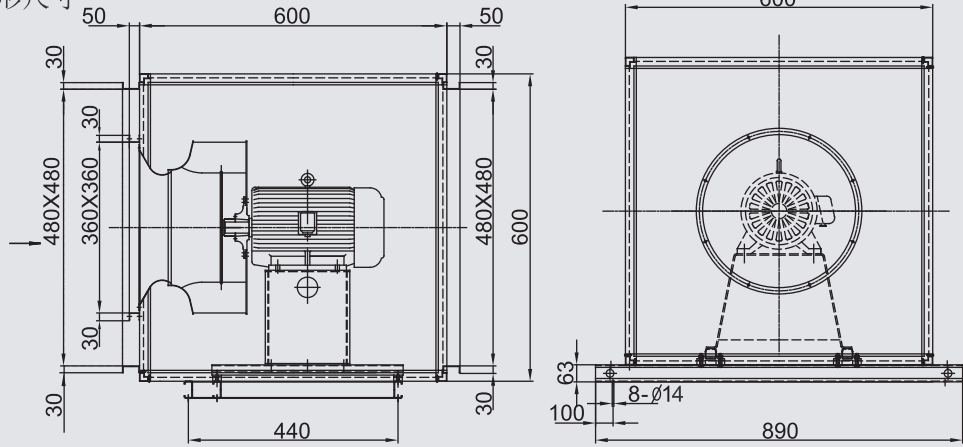


CBPF 355

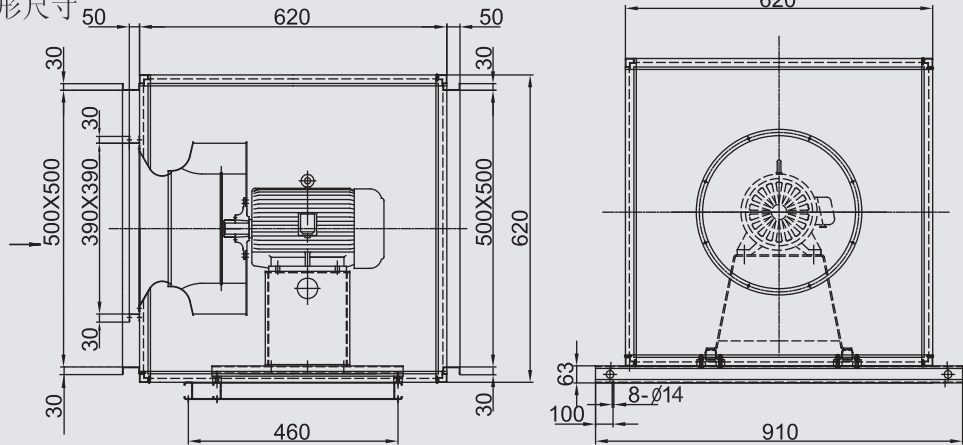


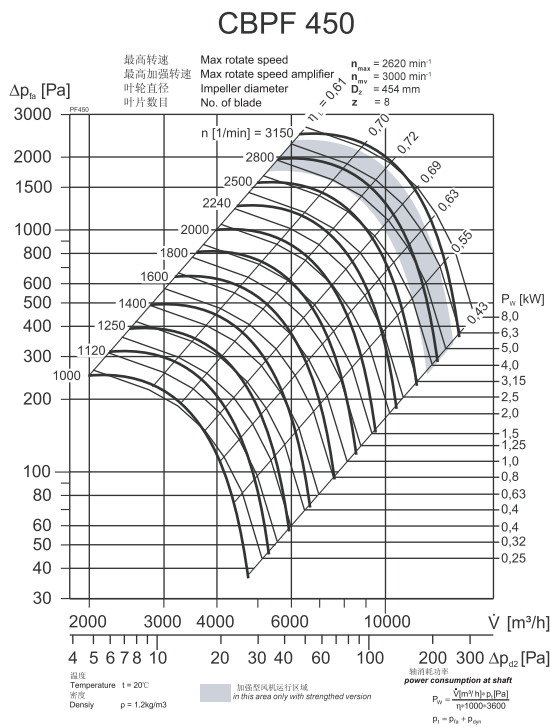
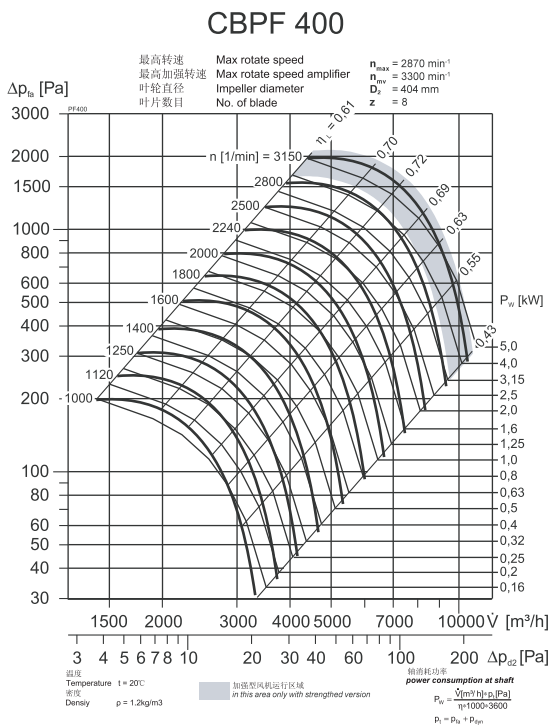
CBPF

CBPF 315外形尺寸

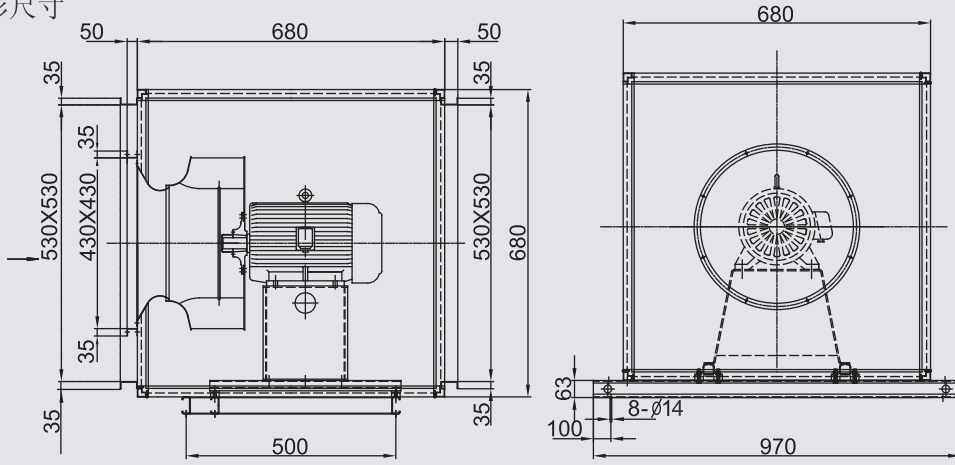


CBPF 355外形尺寸

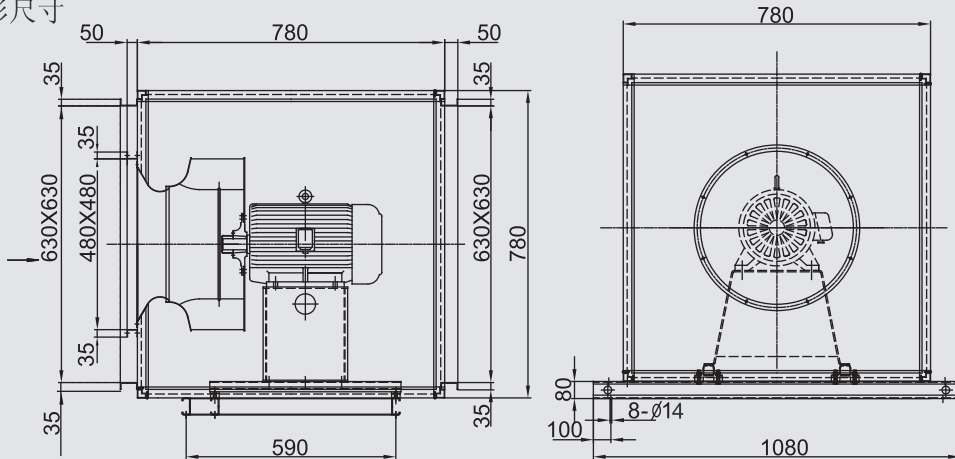


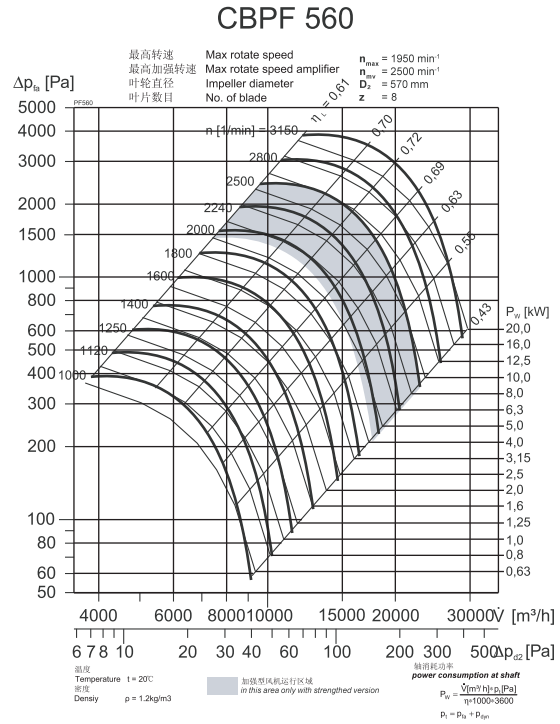
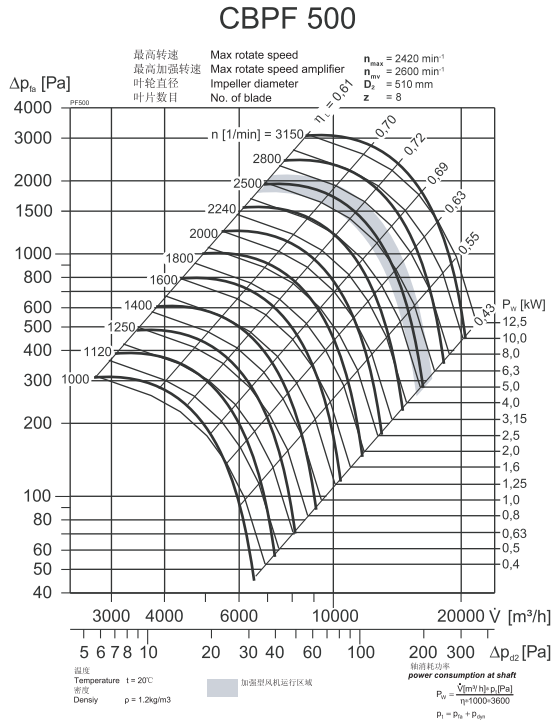


CBPF 400外形尺寸



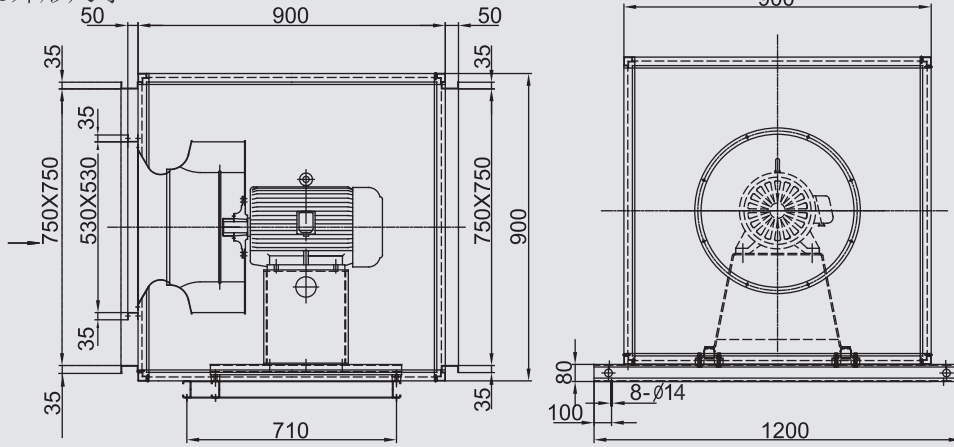
CBPF 450外形尺寸



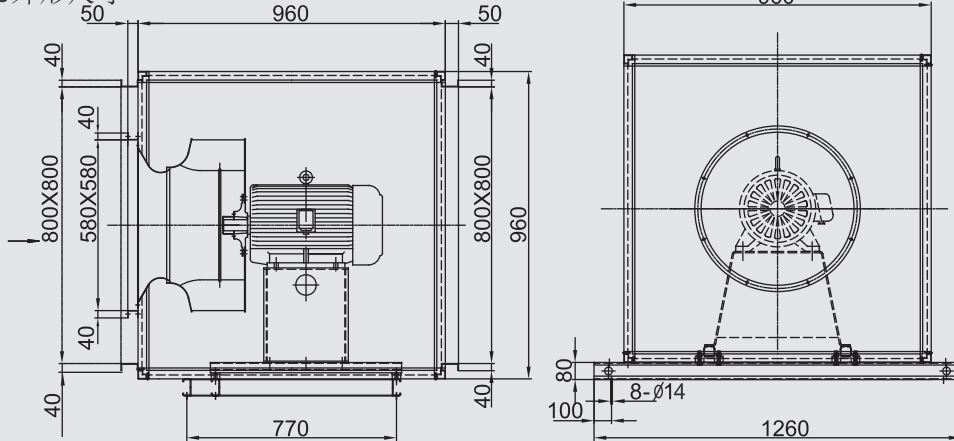


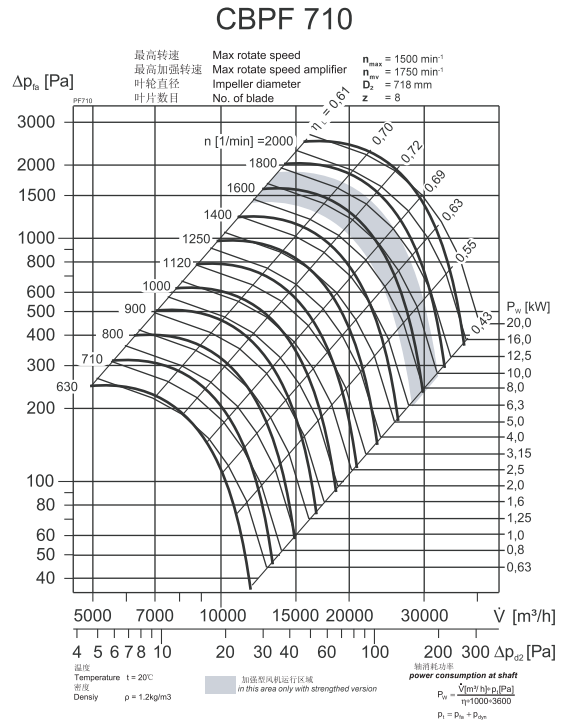
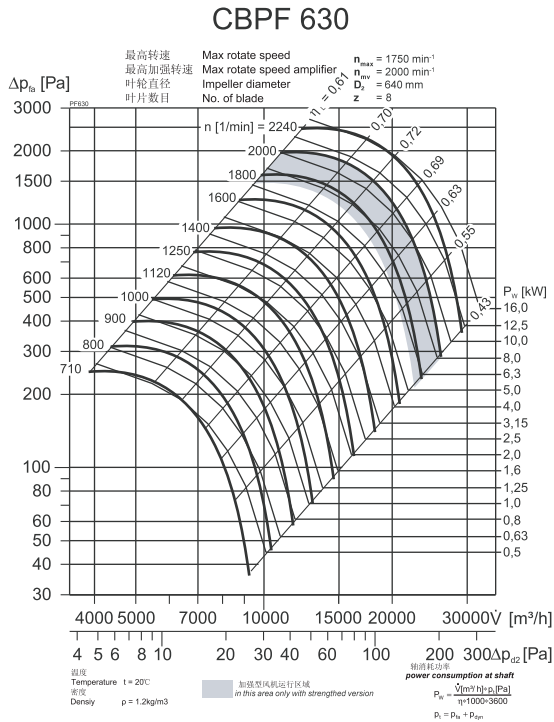
CBPF

CBPF 500外形尺寸

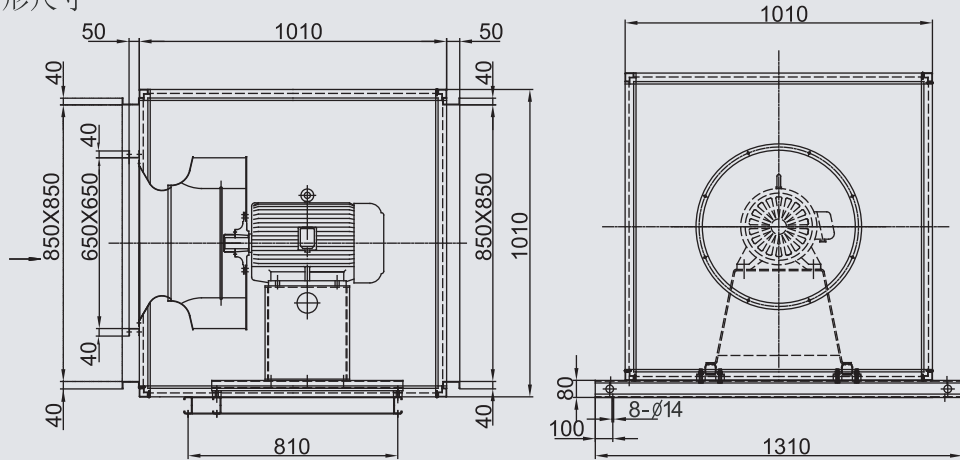


CBPF 560外形尺寸

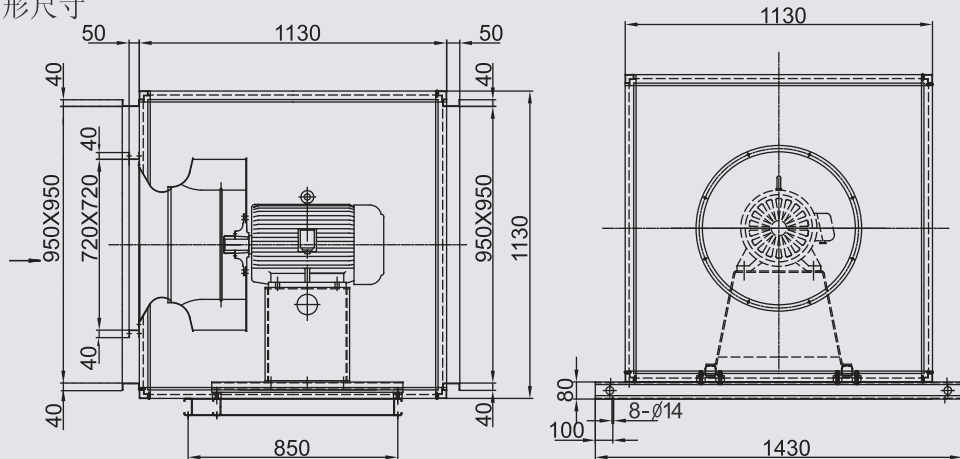


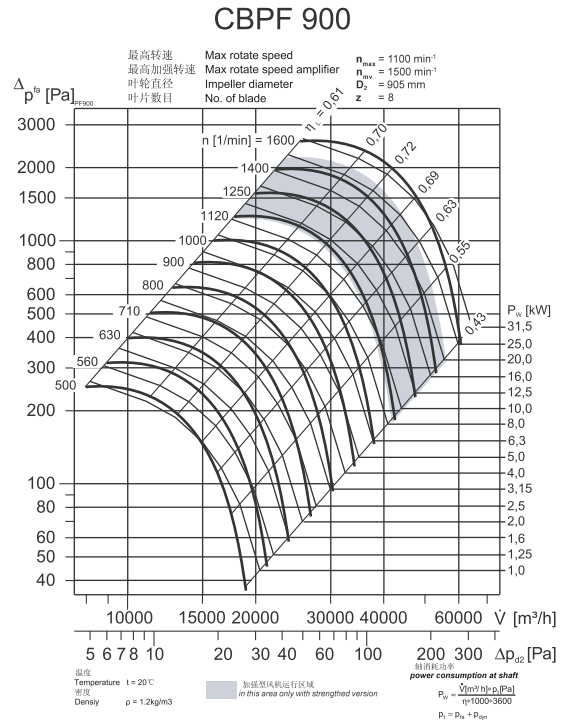
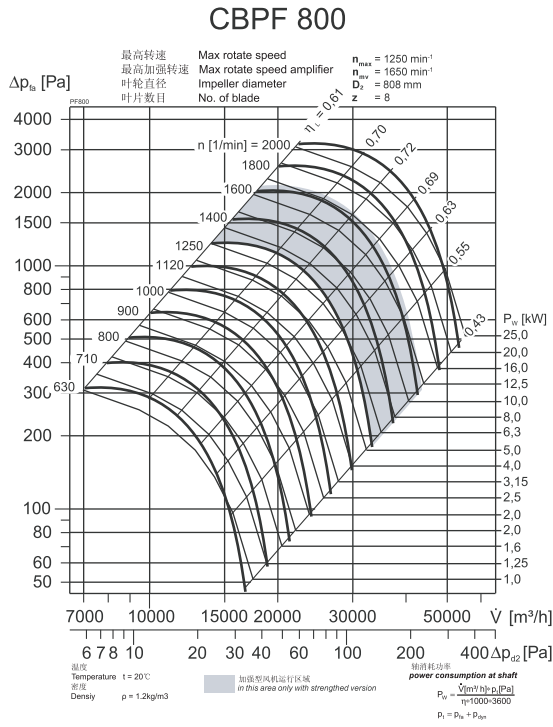


CBPF 630外形尺寸



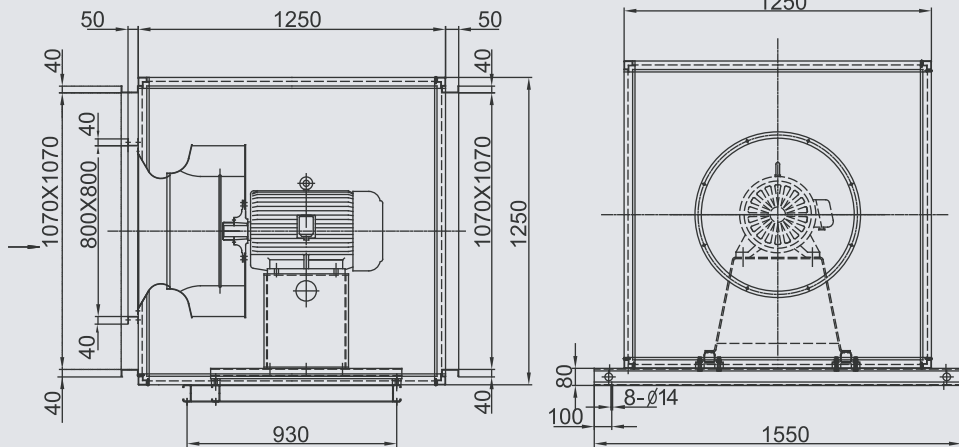
CBPF 710外形尺寸



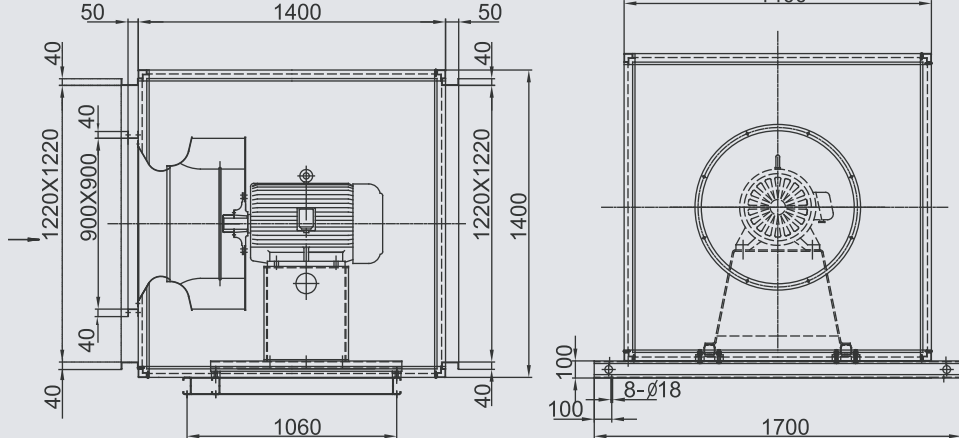


CBPF

CBPF 800外形尺寸



CBPF 900外形尺寸



浙江利达风机有限公司

地址:台州市路桥区横街

Add:Hengjie,Luqiao District Taizhou City

电话Tel:0086(576)2652888 2656000 2653728

传真Fax:0086(576)2655758 邮编P.c:318056

E-mail:info@yilida.com

WWW.YILIDA.COM

Y.07.03-3000